



**Operator's Manual
& Parts Drawings**

LM520 / LM600

Finish Mower

Serial Number LM520-AC1923 --

Serial Number LM600-AB1335 --





500 Venture Drive
Orrville Oh 44667
www.ventrac.com

View all manuals



Visit ventrac.com/manuals for the latest version of this operator's manual.

A downloadable parts manual is also available.

To the Owner Contact Information and Product Identification

If you need to contact an authorized Ventrac dealer for information on servicing your product, always provide the product model and serial numbers.

Please fill in the following information for future reference. See the picture(s) below to find the location of the identification numbers. Record them in the spaces provided.

Date of Purchase: _____

Dealer: _____

Dealer Address: _____

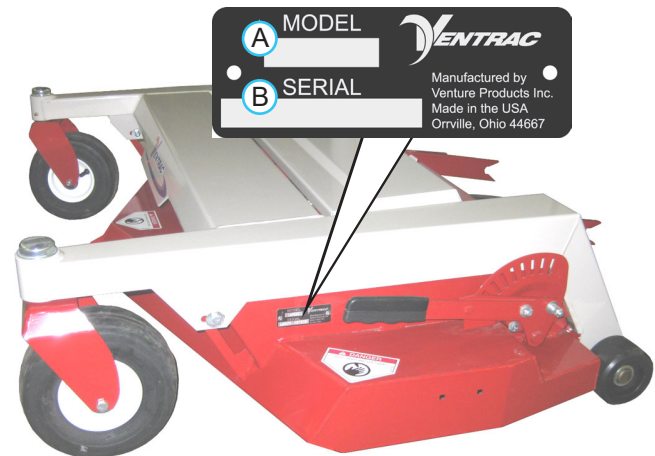
Dealer Phone Number: _____

Dealer Fax Number: _____

Model # (A): _____

Serial # (B): _____

Affix Part/Serial Number label here.



Venture Products Inc. reserves the right to make changes in design or specifications without obligation to make like changes on previously manufactured products.

Blank Page

TABLE OF CONTENTS

INTRODUCTION	PAGE 6
Product Description.....	6
Why Do I Need an Operator’s Manual?	6
Using Your Manual	7
Manual Glossary	7
SAFETY	PAGE 8
Safety Decals	8
Training Required.....	10
Personal Protective Equipment Requirements	10
Operating Safely	10
General Safety Procedures.....	10
Preventing Accidents.....	11
Keep Riders Off.....	11
Operating On Slopes.....	12
Roadway Safety	12
Truck Or Trailer Transport.....	12
Maintenance.....	13
Fuel Safety	13
Hydraulic Safety	14
Cutting Unit Safety	15
OPERATIONAL CONTROLS	PAGE 16
Operational Control Locations.....	16
Main Belt Tensioner (A).....	16
Height Adjustment Handle (B).....	16
GENERAL OPERATION	PAGE 17
Daily Inspection.....	17
Attaching	17
Detaching.....	17
Mowing and Operating Procedure	17
Transport of Mower	18
Cutting Height Adjustment.....	18
Mulching Kit (Optional Accessory)	18
SERVICE	PAGE 19
Cleaning and General Maintenance.....	19
Deck Flip-Up Procedure (Service Position).....	19
Mower Blade Removal & Installation	19
Sharpening Blades.....	19
Deck Belt Inspection	19
Tire Pressure.....	20
Deck Leveling Procedure	20
Lubrication.....	21
Storage.....	21
Maintenance Schedule.....	22
Maintenance Checklist.....	22

TABLE OF CONTENTS

SPECIFICATIONS	PAGE 23
LM520 Dimensions	23
LM600 Dimensions	23
Features	23
PARTS	PAGE 24
Main Deck	24
Carrier Frame	26
Front Caster Wheels & Rear Roller.....	28
Hitch Assembly.....	30
Spindles & Blades	32
39.35150 LM520 Mulching Kit.....	34
39.35151 LM600 Mulching Kit.....	34
WARRANTY	PAGE 36

INTRODUCTION



Venture Products Inc. is pleased to provide you with your new Ventrac mower! We hope that Ventrac equipment will provide you with a ONE Tractor Solution.

Listed below are just some of the items that can provide you *versatility* as you use your LM520 or LM600. Please visit our web site, or contact your authorized Ventrac dealer for a complete list of items available for your new mower.

Accessories	Item Description	Part Number
	LM520 Mulching Kit	39.35150
	Blade, RH Mulch LM520 (requires 3 per mower)	79.0057
	LM600 Mulching Kit	39.35151
	Blade, RH Mulch LM600 (requires 3 per mower)	79.0051
	Blade, RH Highlift LM600 (requires 3 per mower)	79.0035

Product Description

The LM520 and LM600 mowers were designed for the sole purpose of finish mowing. The LM520 features a 52 inch (132 cm) cutting width, and the LM600 features a 60 inch (152 cm) cutting width.

The LM series mowers utilize a rugged all steel frame design which suspends the Ventrac's mower deck. This design gives you a high efficiency grass discharge for a better quality of cut by moving more grass efficiently through the deck tunnel. The mowers are equipped with a full width rear roller and wide pneumatic front swivel tires that float over terrain independent of the power unit.

LAS, a unique *Linear Adjustment System*, provides cutting height selections between 1-1/2 and 3-3/4 inches (3.8 and 9.5 cm). A single handle with a slight outward pull allows for a quick and easy change in cutting height selection. A slide release allows the handle to be returned to deck level, preventing it from catching on low branches and shrubs.

With the removal of two pins beneath the cross frame, the deck can be easily tilted to a near vertical position for maintenance and storage.

All Ventrac LM finish mowers feature a full width rear roller for the ultimate in yard striping. These professional grade mowers are built to give you maximum performance and productivity.

Why Do I Need an Operator's Manual?

This manual has been created to help you gain the important knowledge of what is needed to safely operate, maintain, and service your machine. It is divided into sections for convenient reference of the appropriate section.

You must read and understand the operator's manual for each piece of Ventrac equipment you own. Reading the operator's manual will help you become familiar with each specific piece of equipment. Understanding the operator's manual will help you, as well as others, avoid personal injury and/or damage to the equipment. Keep this manual with the machine at all times. The manual should remain with the machine even if it is sold. If this manual becomes damaged or unreadable, it should be replaced immediately. Contact your local Ventrac dealer for a replacement.

When using a Ventrac attachment, be sure to read and follow the safety and operating instructions of both the power unit and the attachment being used to ensure the safest operation possible.

The information in this manual provides the operator with the safest procedures to operate the machine while getting the maximum use out of the unit. Failure to follow the safety precautions listed in this manual may result in personal injury and/or damage to the equipment.

INTRODUCTION

Using Your Manual

Throughout this manual, you will encounter special messages and symbols that identify potential safety concerns to help you as well as others avoid personal injury or damage to the equipment.

SYMBOL DEFINITIONS



ATTENTION

This symbol identifies potential health and safety hazards. It marks safety precautions. Your safety and the safety of others is involved.

There are three signal words that describe the level of safety concern: Danger, Warning, and Caution. Safety should always be the #1 priority when working on or operating equipment. Accidents are more likely to occur when proper operating procedures are not followed or inexperienced operators are involved.

Note: Right-Hand and Left-Hand orientations may be referred to at different places throughout this manual. Right-Hand and Left-Hand is determined as if sitting on the power unit seat facing forward.

SIGNAL WORD DEFINITIONS

⚠ DANGER

Indicates an imminently hazardous situation which, if not avoided, will result in death or serious injury. This signal word is limited to the most extreme cases.

⚠ WARNING

Indicates a potentially hazardous situation which, if not avoided, could result in death or serious injury.

⚠ CAUTION

Indicates a potentially hazardous situation which, if not avoided, may result in minor or moderate injury and/or property damage. It may also be used to alert against unsafe practices.

Manual Glossary

- Power Unit** A Ventrac tractor or other Ventrac engine powered device that may be operated by itself or with an attachment or accessory.
- Attachment** A piece of Ventrac equipment that requires a Power Unit for operation.
- Accessory** A device that attaches to a Power Unit or Attachment to extend its capabilities.
- Machine** Describes any "Attachment" or "Accessory" that is used in conjunction with a power unit.

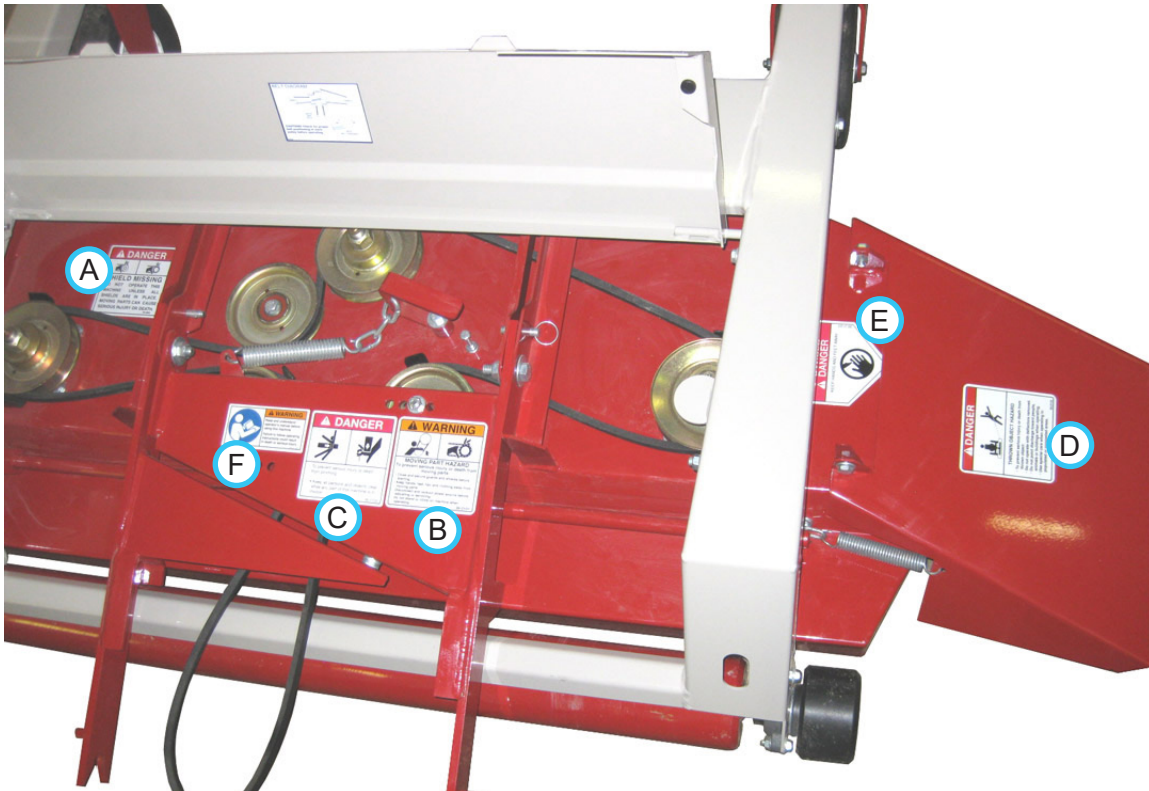
SAFETY

Safety Decals

The following safety decals must be maintained on your LM series mower.

Keep all safety decals legible. Remove all grease, dirt, and debris from safety decals and instructional labels. If any decals are faded, illegible, or missing, contact your dealer promptly for replacements.

When new components are installed, be sure that current safety decals are affixed to the replacement components.



SAFETY



Decal	Description	Part Number	Quantity
A	Danger, Shield Missing	00.0062	1
B	Warning - Moving Part Hazard	00.0101	1
C	Danger, Pinching Hazard	00.0102	1
D	Danger, Thrown Object Hazard	00.0122	1
E	Danger, Keep Hands & Feet Away	00.0123	3
F	Warning, Read Owner's Manual	00.0217	1

SAFETY



General Safety Procedures for Ventrac Power Units, Attachments, & Accessories



Training Required

- The owner of this machine is solely responsible for properly training the operators.
- The owner/operator is solely responsible for the operation of this machine and prevention of accidents or injuries occurring to him/herself, other people, or property.
- Do not allow operation or service by children or untrained personnel. Local regulations may restrict the age of the operator.
- Before operating this machine, read the operator's manual and understand its contents.
- If the operator of the machine cannot understand this manual, then it is the responsibility of this machine's owner to fully explain the material within this manual to the operator.
- Learn and understand the use of all controls.
- Know how to stop the power unit and all attachments quickly in the event of an emergency.



Personal Protective Equipment Requirements

It is the responsibility of the owner to be sure that the operators use the proper personal protective equipment while operating the machine. Required personal protective equipment includes, but is not limited to, the following list.



- Wear a certified ear protection device to prevent loss of hearing.
- Prevent eye injury by wearing safety glasses while operating the machine.
- Closed toe shoes must be worn at all times.
- Long pants must be worn at all times.
- When operating in dusty conditions, it is recommended that a dust mask be worn.

Operation Safety

- Inspect machine before operation. Repair or replace any damaged, worn, or missing parts. Be sure guards and shields are in proper working condition and are secured in place. Make all necessary adjustments before operating machine.
- Some pictures in this manual may show shields or covers opened or removed in order to clearly illustrate any instructions. Under no circumstance should the machine be operated without these devices in place.
- Alterations or modifications to this machine can reduce safety and could cause damage to the machine. Do not alter safety devices or operate with shields or covers removed.
- Before each use, verify that all controls function properly and inspect all safety devices. Do not operate if controls or safety devices are not in proper working condition.
- Check parking brake function before operating. Repair or adjust parking brake if necessary.
- Observe and follow all safety decals.
- All controls are to be operated from the operator's station only.
- Always wear a seat belt if the machine has a roll cage/bar installed and in upright position.
- Ensure the attachment or accessory is locked or fastened securely to the power unit before operating.
- Ensure that all bystanders are clear of the power unit and attachment before operating. Stop machine if someone enters your work area.
- Always be alert to what is happening around you, but do not lose focus on the task you are performing. Always look in the direction the machine is moving.
- Look behind and down before backing up to be sure of a clear path.
- If you hit an object, stop and inspect the machine. Make all necessary repairs before operating machine again.
- Stop operation immediately at any sign of equipment failure. An unusual noise can be a warning of equipment failure or a sign that maintenance is required. Make all necessary repairs before operating machine again.

SAFETY



General Safety Procedures for Ventrac Power Units, Attachments, & Accessories



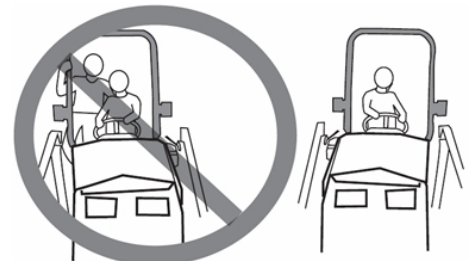
Operation Safety (continued)

- If equipped with a high/low range feature, never shift between high and low range while on a slope. Always move the machine to level ground and engage the parking brake before shifting range.
- Do not leave machine unattended while it is running.
- Always park the machine on level ground.
- Always shut off engine when connecting attachment drive belt to the power unit.
- Never leave the operator's station without lowering the attachment to the ground, setting the parking brake, shutting off the engine, and removing the ignition key. Make sure all moving parts have come to a complete stop before dismounting.
- Never leave equipment unattended without lowering the attachment to the ground, setting the parking brake, shutting off the engine, and removing the ignition key.
- Only operate in well-lit conditions.
- Do not operate when there is a risk of lightning.
- Never direct the discharge of any attachment in the direction of people, buildings, animals, vehicles, or other objects of value.
- Never discharge material against a wall or obstruction. Material may ricochet back towards the operator.
- Use extra caution when approaching blind corners, shrubs, trees, or other objects that may obscure vision.
- Do not run the engine in a building without adequate ventilation.
- Do not touch the engine or the muffler while the engine is running or immediately after stopping the engine. These areas may be hot enough to cause a burn.
- Do not change the engine governor settings or over-speed the engine. Operating engine at excessive speed may increase the hazard of personal injury.
- To reduce the hazard of fire, keep the battery compartment, engine, and muffler areas free of grass, leaves, excessive grease, and other flammable materials.

Preventing Accidents



- Clear working area of objects that might be hit or thrown from machine.
- Keep people and pets out of working area.
- Know the work area well before operation. Do not operate where traction or stability is questionable.
- Reduce speed when you are operating over rough ground.
- Equipment can cause serious injury and/or death when improperly used. Before operating, know and understand the operation and safety of the power unit and the attachment being used.
- Do not operate machine if you are not in good physical and mental health, if you will be distracted by personal devices, or are under the influence of any substance which might impair decision, dexterity, or judgment.
- Children are attracted to machine activity. Be aware of children and do not allow them in the working area. Turn off the machine if a child enters the work area.



Keep Riders Off

- Only allow the operator on the power unit. Keep riders off.
- Never allow riders on any attachment or accessory.

SAFETY

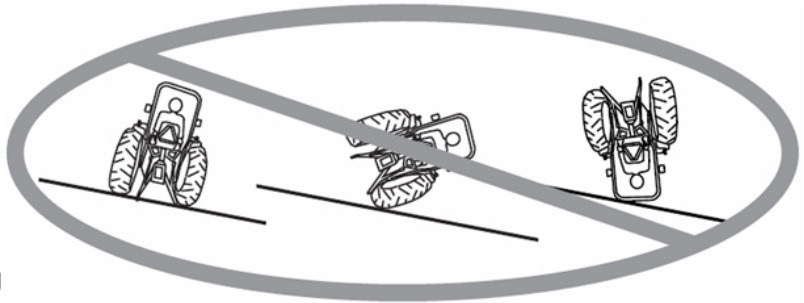


General Safety Procedures for Ventrac Power Units, Attachments, & Accessories



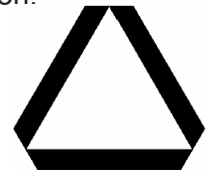
Operating On Slopes

- Slopes can cause loss-of-control and tip-over accidents, which can result in severe injury or death. Be familiar with the emergency parking brake, along with the power unit controls and their functions.
- If power unit is equipped with a fold down roll bar, it must be locked in the upright position when operating on any slope.
- Use low range (if equipped) when operating on slopes greater than 15 degrees.
- Do not stop or start suddenly when operating on slopes.
- Never shift between high and low range while on a slope. Always move the power unit to level ground and engage the parking brake before shifting range or placing the power unit in neutral.
- Variables such as wet surface and loose ground will reduce the degree of safety. Do not drive where machine could lose traction or tip over.
- Keep alert for hidden hazards in the terrain.
- Stay away from drop-offs, ditches, and embankments.
- Sharp turns should be avoided when operating on slopes.
- Pulling loads on hills decreases safety. It is the responsibility of the owner/operator to determine loads that can safely be controlled on slopes.
- Transport machine with attachment lowered or close to the ground to improve stability.
- While operating on slopes, drive in an up and down direction when possible. If turning is necessary while driving across slopes, reduce speed and turn slowly in the downhill direction.
- Assure a sufficient supply of fuel for continuous operation. A minimum of one-half tank of fuel is recommended.



Roadway Safety

- Operate with safety lights when operating on or near roadways.
- Obey all state and local laws concerning operation on roadways.
- Slow down and be careful of traffic when operating near or crossing roadways. Stop before crossing roads or sidewalks. Use care when approaching areas or objects that may obscure vision.
- If there is doubt of safety conditions, discontinue machine operation until a time when operation can be performed safely.
- When operating near or on roadways, have a Slow Moving Vehicle Emblem clearly displayed.



Truck Or Trailer Transport

- Use care when loading or unloading machine into a truck or trailer.
- Use full width ramps for loading machine into a truck or trailer.
- The parking brake is not sufficient to lock the machine during transport. Always secure the power unit and/or attachment to the transporting vehicle securely using straps, chains, cable, or ropes. Both front and rear straps should be directed down and outward from the machine.
- Shut off fuel supply to power unit during transport on truck or trailer.
- If equipped, turn the battery disconnect switch to the Off position to shut off electrical power.

SAFETY



General Safety Procedures for Ventrac Power Units, Attachments, & Accessories



Maintenance

- Keep all safety decals legible. Remove all grease dirt, and debris from safety decals and instructional labels.
- If any decals are faded, illegible, or missing, contact your dealer promptly for replacements.
- When new components are installed, be sure that current safety decals are affixed to the replacement components.
- If any component requires replacement, use only original Ventrac replacement parts.
- Always turn the battery disconnect to the Off position or disconnect the battery before performing any repairs. Disconnect the negative terminal first and the positive terminal last. Reconnect the positive terminal first and the negative terminal last.
- Keep all bolts, nuts, screws, and other fasteners properly tightened.
- Always lower the attachment to the ground, engage parking brake, shut off engine, and remove the ignition key. Make sure all moving parts have come to a complete stop before cleaning, inspection, adjusting or repairing.
- If the power unit, attachment, or accessory requires repairs or adjustments not instructed in the operator's manual, the power unit, attachment, or accessory must be taken to an authorized Ventrac dealer for service.
- Never perform maintenance on the power unit and/or attachment if someone is in the operator's station.
- Always use protective glasses when handling the battery.
- Check all fuel lines for tightness and wear on a regular basis. Tighten or repair them as needed.
- To reduce the hazard of fire, keep the battery compartment, engine, and muffler areas free of grass, leaves, and excessive grease.
- Do not touch the engine, the muffler, or other exhaust components while the engine is running or immediately after stopping the engine. These areas may be hot enough to cause a burn.
- Allow the engine to cool before storing and do not store near an open flame.
- Do not change the engine governor settings or over-speed the engine. Operating engine at excessive speed may increase the hazard of personal injury.
- Springs may contain stored energy. Use caution when disengaging or removing springs and/or spring loaded components.
- An obstruction or blockage in a drive system or moving/rotating parts may cause a buildup of stored energy. When the obstruction or blockage is removed, the drive system or moving/rotating parts may move suddenly. Do not attempt to remove an obstruction or blockage with your hands. Keep hands, feet, and clothing away from all power-driven parts.
- Dispose of all fluids in accordance with local laws.

Fuel Safety



- To avoid personal injury or property damage, use extreme care in handling gasoline. Gasoline is extremely flammable and the vapors are explosive.
- Do not refuel machine while smoking or at a location near flames or sparks.
- Always refuel the machine outdoors.
- Do not store machine or fuel container indoors where fumes or fuel can reach an open flame, spark, or pilot light.
- Only store fuel in an approved container. Keep out of reach of children.
- Never fill containers inside a vehicle or on a truck or trailer bed with a plastic liner. Always place containers on the ground away from your vehicle before filling.
- Remove machine from the truck or trailer and refuel it on the ground. If this is not possible, refuel the machine using a portable container, rather than from a fuel dispenser nozzle.
- Never remove fuel cap or add fuel with the engine running. Allow engine to cool before refueling.
- Never remove fuel cap while on a slope. Only remove when parked on a level surface.
- Replace all fuel tank and container caps securely.

SAFETY



General Safety Procedures for Ventrac Power Units, Attachments, & Accessories



Fuel Safety (continued)

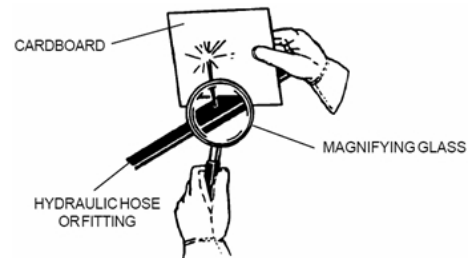
- Do not overfill fuel tank. Only fill to bottom of fuel neck, do not fill fuel neck full. Overfilling of fuel tank could result in engine flooding, fuel leakage from the tank, and/or damage to the emissions control system.
- If fuel is spilled, do not attempt to start the engine. Move the power unit away from the fuel spill and avoid creating any source of ignition until fuel vapors have dissipated.
- If the fuel tank must be drained, it should be drained outdoors into an approved container.
- Dispose of all fluids in accordance with local laws.
- Check all fuel lines for tightness and wear on a regular basis. Tighten or repair them as needed.
- The fuel system is equipped with a shut-off valve. Shut off the fuel when transporting the machine to and from the job, when parking the machine indoors, or when servicing the fuel system.

Hydraulic Safety

- Make sure all hydraulic connections are tight and all hydraulic hoses and tubes are in good condition. Repair any leaks and replace any damaged or deteriorated hoses or tubes before starting the machine.
- Hydraulic leaks can occur under high pressure. Hydraulic leaks require special care and attention.
- Use a piece of cardboard and a magnifying glass to locate suspected hydraulic leaks.



- Keep body and hands away from pinhole leaks or nozzles that eject high pressure hydraulic fluid. Hydraulic fluid escaping under high pressure can penetrate the skin causing serious injury, leading to severe complications and/or secondary infections if left untreated. If hydraulic fluid is injected into the skin, seek immediate medical attention no matter how minor the injury appears.



- Hydraulic system may contain stored energy. Before performing maintenance or repairs on the hydraulic system, remove attachments, engage parking brake, disengage weight transfer system (if equipped), shut off engine, and remove ignition key. To relieve pressure on the auxiliary hydraulic system, shut off the power unit engine and move the hydraulic control lever left and right before disconnecting the auxiliary hydraulic quick couplers.
- Dispose of all fluids in accordance with local laws.

SAFETY



LM520 & LM600 Safety Procedures



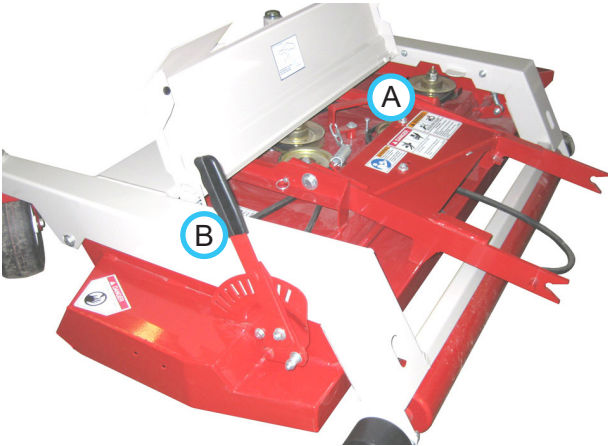
Cutting Unit Safety

- Rotating Blades: Contact with the rotating mower blades or other moving parts may cause personal injury. Keep hands and feet away.
- Rotation of one blade may cause another blade to rotate.
- Thrown Object Hazard: Do not point discharge toward people, animals, or buildings when operating. Never operate with the deflectors removed.
- When not mowing, always shut off the PTO to stop the mower blades.
- Never raise the mower deck with the blades running.



OPERATIONAL CONTROLS

Operational Control Locations

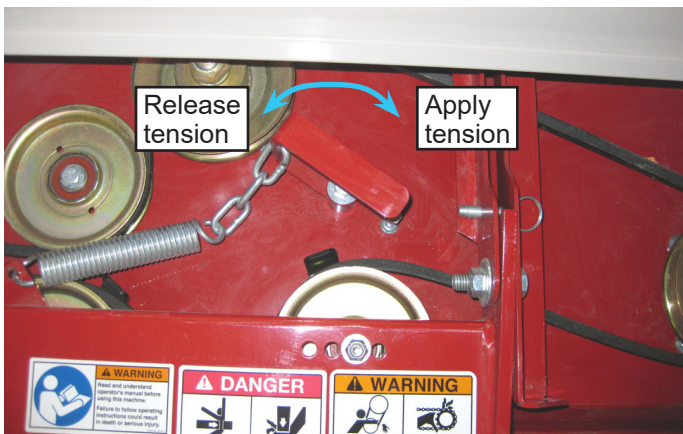


A - Main Belt Tensioner

B - Height Adjustment Handle

Main Belt Tensioner (A)

Rotating the main belt tensioner clockwise until it locks applies tension to the attachment drive belt. Rotating the main belt tensioner counter-clockwise releases tension on the attachment drive belt, allowing the operator to remove or install the attachment drive belt onto the power unit.



Height Adjustment Handle (B)

The height adjustment handle is used to raise or lower the deck to achieve the desired cutting height.

GENERAL OPERATION

Daily Inspection

⚠ WARNING

Always set the parking brake, shut off the power unit engine, remove the ignition key, and ensure all moving parts have stopped before checking mower deck or blade condition, or attempting any repair or adjustment.

1. Park the power unit and mower deck on a level surface, with the engine shut off and all fluids cold.
2. Perform a visual inspection of the power unit and mower deck. Look for loose or missing hardware, damaged components, or signs of wear. Inspect hydraulic hoses, hydraulic fittings, and fuel lines to ensure tight, leak free connections.
3. Refer to the power unit operator's manual. Check the power unit's engine oil, hydraulic oil, cooling system, tire pressure, and fuel level. Add fluid or service system as required.
4. Inspect the drive belts and mower blades. Belts should be in good condition. Blades should be sharp and securely fastened. Service as required.
5. Refer to the power unit operator's manual. Test the power unit's operator safety interlock system.

Attaching

1. Drive the power unit slowly forward into the hitch arms of the mower deck. Align the lift arms of the power unit with the mower hitch arms by raising or lowering the front hitch and complete the engagement.
2. Once completely engaged, close the front hitch locking lever.*
3. Engage the parking brake* and shut off the engine.
4. Place the attachment belt onto the PTO drive pulley on the power unit. Ensure the deck belt is properly routed and engaged in each pulley.
5. Engage the main belt tensioner. NOTE: if deck is raised to the top position, the deck shield will interfere with the belt tensioner.
6. Always check to ensure the deck belt is properly located in each pulley groove before attempting to operate.

Detaching

1. Park the power unit on a level surface and set the parking brake.*
2. Lower the mower deck to the ground.
3. Shut off power unit engine.

4. Raise the mower deck to the highest cutting height position for easy reattachment.
5. Disengage the main belt tensioner.
6. Remove the attachment belt from the PTO drive pulley of the power unit.
7. Disengage the hitch locking lever.*
8. Restart the power unit and slowly back away from the mower. A side to side movement of the steering wheel may aid disengagement.

Mowing and Operating Procedure

Before operation, perform daily inspection and confirm that the cutting height is set properly. Set the power unit's weight transfer system* (if equipped) to the desired setting.

With the power unit engine running between 2,000 and 2,500 RPM, engage the PTO switch. Adjust the throttle to the desired engine RPM.

Lower the mower deck to the ground and place the power unit's primary S.D.L.A. control lever in the float position by pushing it to the right until the detent engages. The lever will stay in this position until intentionally removed.

Begin forward motion in the desired path of mowing. Avoid obstacles, removing debris as necessary.

A stripe pattern in the grass is produced when each mowing pass is done in the opposite direction of the pass beside it. This look is enhanced by the full length roller, which helps to roll the grass in the direction of travel.

Lift the mower deck when the edge of the mowing area is reached. Turn the power unit and mower around and align for the next pass.

⚠ WARNING

Always shut off the engine, remove the ignition key, and set the parking brake before checking mower deck or blade condition, or attempting any repair or adjustment.

Blades should be kept in good condition. Sharp blades will increase efficiency and improve the quality of cut.

Mowing in wet conditions may result in a build up of clippings under the deck. Periodic checking should be done by the operator to determine if the deck should be cleaned. The deck should also be checked anytime mowing performance seems to be reduced.

* Refer to power unit operator's manual for operation of power unit controls.

GENERAL OPERATION

Transport of Mower

Transport the mower deck with the power unit front hitch and mower fully raised to reduce wear of the equipment. Travel slowly when transporting over undulating and rough surfaces to maintain control of power unit and to reduce the shock to the power unit and mower deck. Always disengage the power unit PTO before transporting the mower.

Cutting Height Adjustment

WARNING

Always shut off the engine, remove the ignition key, and set the parking brake before checking mower deck or blade condition, or attempting any repair or adjustment.

1. Lift the height adjustment handle upward and hook the lock pin into the notch on the height setting control bracket.
2. Pull the handle outward to release the catch from the height adjust index plate.
3. Rotate the height adjustment handle up or down until the desired setting is reached.
4. When the desired cutting height is reached, release the height adjustment catch into the proper notch.
5. Lift the height adjustment handle free of the height setting control bracket and rotate down to lay on the deck.

Mulching Kit (Optional Accessory)

Mulching procedures may vary greatly due to climate, type of grass, and soil conditions. It is generally best to mow frequently and in dry conditions.

Leaves are usually mulched and dispersed better when some grass is cut with the leaves.

Mulching often requires more power than normal mowing.

When mulching wet and/or thick grass, more frequent cleaning of the underside of the deck is necessary.

Low lift or mulching blades are recommended for mulching. Blades must be sharp and in good condition for best results.

SERVICE

⚠ WARNING

Always shut off the engine, remove the ignition key, and set the parking brake before checking mower deck or blade condition, or attempting any repair or adjustment.



Attention

If any component requires replacement, use only original Ventrac replacement parts.

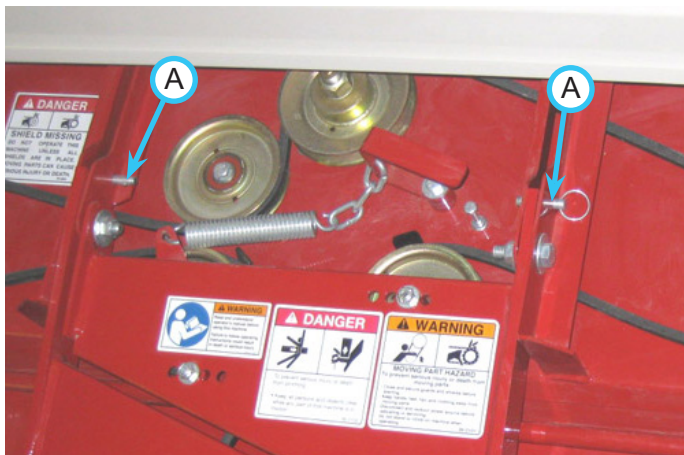
Cleaning and General Maintenance

For best results, and to maintain the finish of the mower, clean or wash the mower to remove accumulated clippings, leaves, and dirt when the job is finished. Refer to the "Deck Flip-up procedure" in the service section to access the underside of the deck.

If washing the deck, do not spray directly into bearings or seals. After washing, it is important to run the mower so that water does not reside on seals of bearings for the drive system. When washing is complete, return the deck to the operating position and activate the PTO for 30 seconds to remove any standing water.

Deck Flip-Up Procedure (Service Position)

1. Park the power unit and mower deck on a smooth, level surface.
2. Raise the power unit front hitch to its highest position.
3. Set the parking brake, shut off the engine, and remove the ignition key.
4. Adjust the mower deck height to the lowest cutting height position.
5. Lift the mower deck shield and remove the 2) ball pins (A) that lock the hitch arms from pivoting.



6. Lift the mower deck up to a near vertical position

and reinstall the ball pins to lock the deck in the upright position.

7. To return the deck to the operating position, remove the 2) ball pins and lower the deck to the ground. Reinstall the ball pins and lower the mower deck shield into place.

Mower Blade Removal & Installation

⚠ CAUTION

Mower blades may be sharp. Always wear safety glasses, leather gloves, and a long sleeve shirt when working with mower blades.

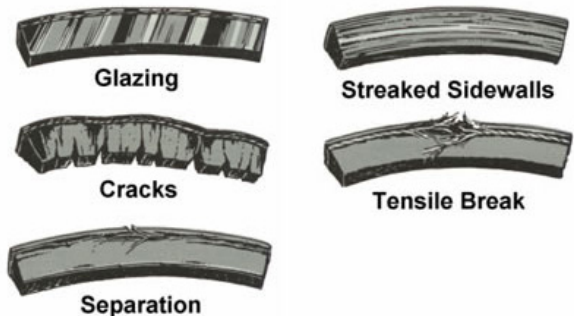
1. Rotate the mower deck up to the service position following the deck flip-up procedure.
2. Place a short piece of 2 x 4 wood between the end of the blade and an appropriate structural part of the underside of the deck to prevent the blade from rotating.
3. Loosen the blade bolt counterclockwise and remove the blade for sharpening or replacement.
4. When installing a blade, the wood block must be placed on the opposite side to prevent rotation for tightening the blade bolt.
5. Tighten the blade bolt to 75-80 ft. lbs.

Sharpening Blades

Blades should be sharpened and balanced by a professional. Maintain balance, same bevel, and length of sharpened surface.

Deck Belt Inspection

Inspecting the drive belts of the mower can prevent sudden belt failure by finding problems before they cause a belt to break. Typical wear on a drive belt may result in the conditions shown in the diagram.

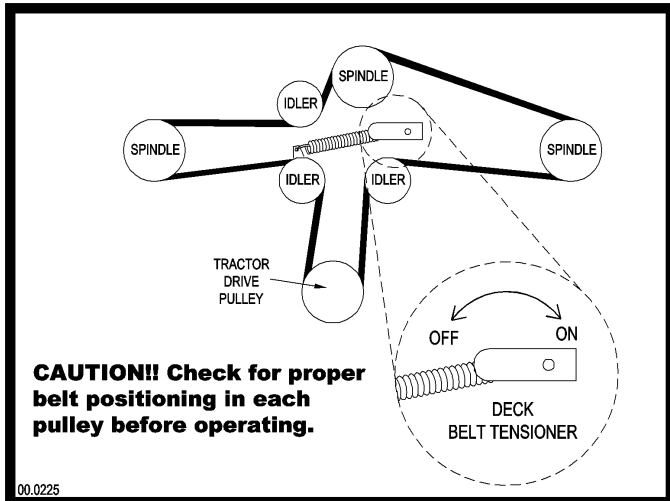


If any of these conditions occur, the drive belt will require replacement.

SERVICE

Deck Belt Replacement

1. Detach the mower deck from the power unit.
2. Raise the mower deck shield.
3. Remove the old deck belt.
4. Install the new deck belt. Place belt into the pulley system according to the belt diagram located on the underside of the mower deck shield.



5. Ensure the belt is engaged in the groove of each spindle pulley and around each of the flat idler pulleys.

Tire Pressure

On mower decks equipped with pneumatic (inflatable) tires, the tire pressure should be maintained at 6-8 psi. Pressure variance between left and right tires can cause an uneven cut.

On mower decks with equipped with flat-free tires, no tire pressure adjustments are required. The flat-free cushioning tires provide a maintenance free, consistent cutting height.

Deck Leveling Procedure

CAUTION

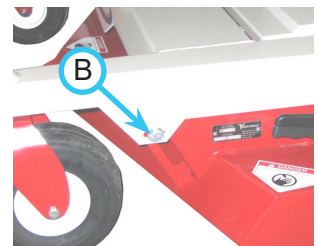
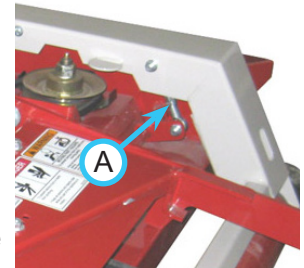
Mower blades may be sharp. Always wear safety glasses, leather gloves, and a long sleeve shirt when working with mower blades.

1. Place the mower on a hard surface that is clean and level. Detach the mower from the power unit.
2. Raise the mower deck to the highest cutting height setting.
3. Block the tires and rear roller to prevent the mower from rolling during leveling procedure.
4. Ensure both front tires are inflated to the recommended tire pressure (See Tire Pressure section).

WARNING

Place blocks under 4) corners of the deck when reaching under the mower deck to prevent the deck from accidentally dropping and trapping or crushing a bodily appendage.

5. Check the mower blades to ensure they are not bent. To check for bent blades, move one blade tip to the back of the deck and measure from the floor to the blade. Rotate the other blade tip to the back of the deck and measure again. If the distance is different, the blade is bent and should be replaced before continuing.
6. Go to one side of the deck. Turn the blade so the tip is at the back of the deck. Measure the distance from the floor to the blade.
7. Move to the other side of the mower deck and turn that blade tip to the back of the deck. If this measures differently from the first side, adjust the threaded rod linkage (A) directly above on the top side of the deck until the measurement is the same as the first side.
8. Once the deck has been leveled side to side, rotate the same blade tip to the front of the deck and measure. The distance from the floor to the blade should be the same to 1/8" (3 mm) lower than the rear measurement.
9. If the front of the deck requires adjustment, loosen the cross bolts (B) in the carrier frame. Move the bolts forward in the slots to lower the deck or move the bolts rearward in the slots to raise the deck. NOTE: slight movement of the bolt in the front carrier slots will make a significant difference in the front deck height.

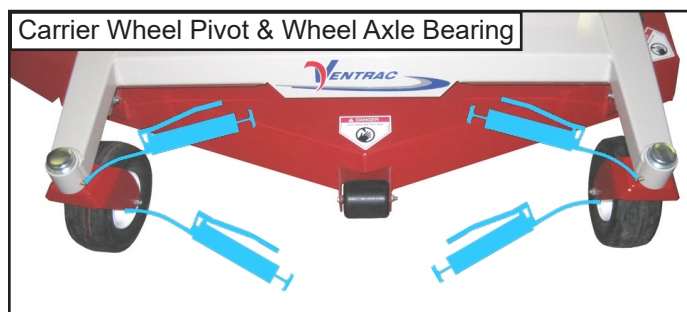
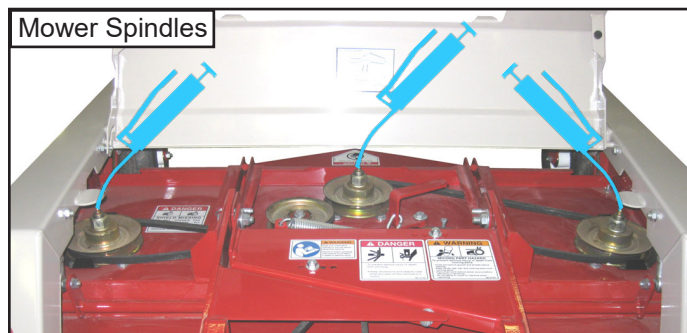
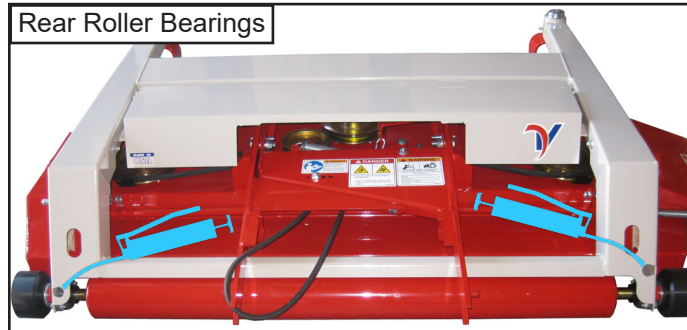


SERVICE

Lubrication

Lubrication is required at the following locations using a lithium complex NLGI #2 type grease. Refer to the maintenance schedule for service intervals.

When greasing the rear roller bearings, if the carrier frame is not equipped with access holes, flip the mower deck up into the service position (See Deck Flip-Up Procedure section) and raise the mower deck to the highest cutting height setting to access the grease fittings.



Storage

Preparing the Mower for Storage

1. Clean the mower deck and frame.
2. Inspect for loose or missing hardware, damaged components, or signs of wear. Repair or replace any damaged or worn components
3. Inspect belts, spindles, and blades. Repair or replace any damaged or worn components
4. Apply grease to all grease points.
5. Wipe off all excess grease or oil.

Removing the Mower from Storage

1. Clean the mower deck to remove any accumulated dust or debris.
2. Inspect the mower deck as instructed in the daily inspection section of this manual.
3. Test the mower deck to ensure all components are working properly.

SERVICE

Maintenance Schedule

LM520 & LM600

Maintenance Schedule	# of Locations	# of Pumps	AS NEEDED	Daily	At 50 Hours	At 100 Hours	At 150 Hours	At 200 Hours	At 250 Hours	At 300 Hours	At 350 Hours	At 400 Hours	At 450 Hours	At 500 Hours	At 550 Hours	At 600 Hours	At 650 Hours	At 700 Hours	At 750 Hours	At 800 Hours	At 850 Hours	At 900 Hours	At 950 Hours	At 1000 Hours	Yearly
Grease & Lubrication: See Lubrication Section																									
Caster Wheel Pivot	2	1			✓	✓	✓	✓	✓	✓	✓	✓	✓	✓	✓	✓	✓	✓	✓	✓	✓	✓	✓	✓	✓
Wheel Axle Bearing	2	^	**		✓	✓	✓	✓	✓	✓	✓	✓	✓	✓	✓	✓	✓	✓	✓	✓	✓	✓	✓	✓	✓
Rear Roller Bearing	2	1			✓	✓	✓	✓	✓	✓	✓	✓	✓	✓	✓	✓	✓	✓	✓	✓	✓	✓	✓	✓	✓
Spindle	3	3			✓	✓	✓	✓	✓	✓	✓	✓	✓	✓	✓	✓	✓	✓	✓	✓	✓	✓	✓	✓	✓
Deck Slide	4	%	**		✓	✓	✓	✓	✓	✓	✓	✓	✓	✓	✓	✓	✓	✓	✓	✓	✓	✓	✓	✓	✓
Inspection																									
Inspect for Loose, Missing, or Worn Components.			✓																						
Inspect Belts, Pulleys, Blades, and Blade Retaining Bolts			✓																						
Check Tire Pressure, If Applicable			✓																						
Check Hitch Pivot Bolts. Torque to 75 ft lbs					✓		✓		✓		✓		✓		✓		✓		✓		✓		✓		✓
** Operation in severe conditions may require more frequent service intervals.																									
^ Grease until fresh grease is visible.																									
% Clean and relubricate with a thin film of grease																									

Maintenance Checklist

LM520 & LM600

Maintenance Checklist	# of Locations	# of Pumps	AS NEEDED	Daily	At 50 Hours	At 100 Hours	At 150 Hours	At 200 Hours	At 250 Hours	At 300 Hours	At 350 Hours	At 400 Hours	At 450 Hours	At 500 Hours	At 550 Hours	At 600 Hours	At 650 Hours	At 700 Hours	At 750 Hours	At 800 Hours	At 850 Hours	At 900 Hours	At 950 Hours	At 1000 Hours	Yearly
Grease & Lubrication: See Lubrication Section																									
Wheel Swivel Bearing	2	1																							
Wheel Axle Bearing	2	^	**																						
Rear Roller Bearing	2	1																							
Spindle	3	3																							
Deck Slide	4	%	**																						
Inspection																									
Inspect for Loose, Missing, or Worn Components.																									
Inspect Belts, Pulleys, Blades, and Blade Retaining Bolts																									
Check Tire Pressure, If Applicable																									
Check Hitch Pivot Bolts. Torque to 75 ft lbs																									
** Operation in severe conditions may require more frequent service intervals.																									
^ Grease until fresh grease is visible.																									
% Clean and relubricate with a thin film of grease																									

SPECIFICATIONS

LM520 Dimensions

Overall Height	13 inches (33 cm)
Overall Length	45 inches (114 cm)
Overall Width	63 inches (160 cm)
Weight	273 pounds (124 kg)
Cutting Width	52 inches (132 cm)
Approximate Cutting Height Range	1-1/2 - 3-3/4 inches (3.8 - 9.5 cm)
Number of Cutting Positions	10 positions
Number of Blades	3 blades

LM600 Dimensions

Overall Height	13 inches (33 cm)
Overall Length	45 inches (114 cm)
Overall Width	70 inches (178 cm)
Weight	310 pounds (141 kg)
Cutting Width	60 inches (152 cm)
Approximate Cutting Height Range	1-1/2 - 3-3/4 inches (3.8 - 9.5 cm)
Number of Cutting Positions	10 positions
Number of Blades	3 blades

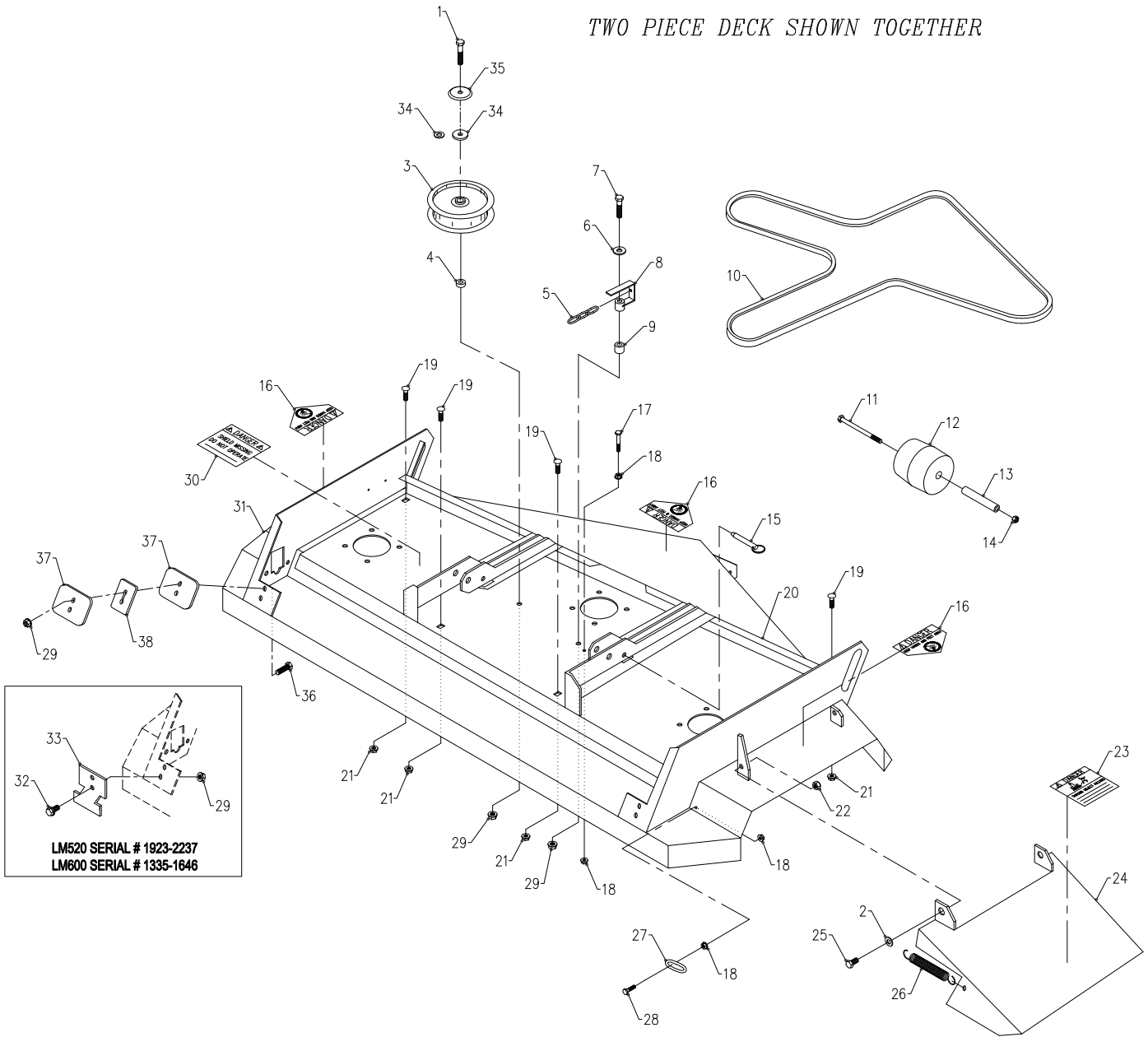
Features

- Flip-up Deck
- Single Lever Linear Adjustment System
- Field Serviceable Spindles
- Full Floating Deck

PARTS

ILLUSTRATED DRAWING Main Deck

TWO PIECE DECK SHOWN TOGETHER



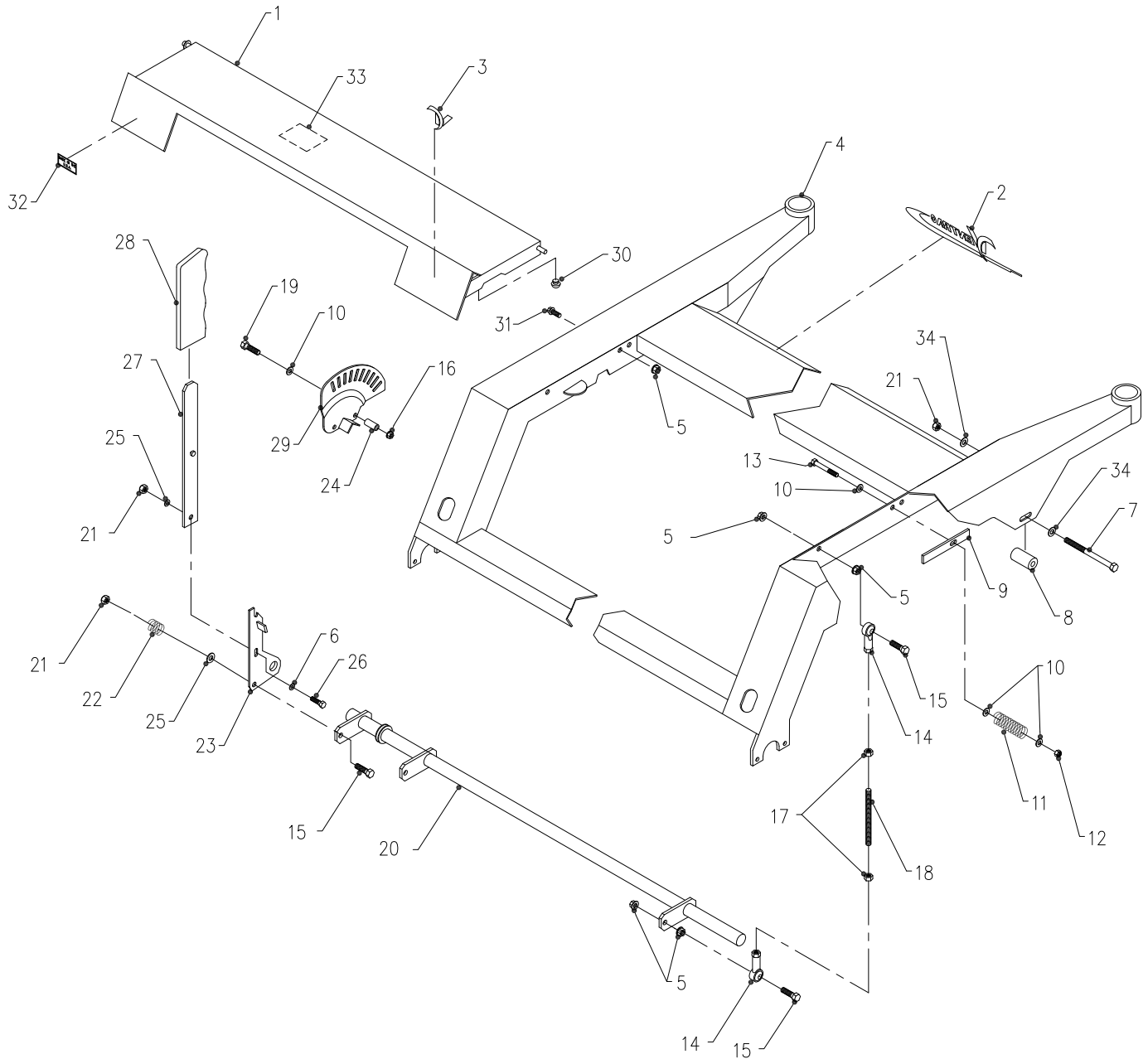
PARTS

Main Deck

REF.	LM520 PART NO.	LM600 PART NO.	DESCRIPTION	QTY.
1	90.0616	90.0616	BOLT, 3/8-16 USS X 2	1
2	95.06	95.06	WASHER, FLAT 3/8 SAE	2
3	83.0037	83.0037	PULLEY, IDLER FLAT 4" X 3/8	1
4	85.SC06	85.SC06	SET COLLAR, 3/8"	1
5	81.0131	81.0131	CHAIN, 3/16 PLATED 3 LINKS	1
6	94.06	94.06	WASHER, FLAT 3/8 USS	1
7	90.0614	90.0614	BOLT, 3/8-16 USS X 1 3/4	1
8	42.0417	42.0417	TENSIONER, MAIN BELT TIGHTNER	1
9	64.0797	64.0797	BUSHING, 7/16 X 3/4 X 1-1/16L	1
10	81.A128	81.A144	BELT	1
11	90.0536	90.0536	BOLT, 5/16-18 USS X 4 1/2	1
12	50.0047	50.0047	ROLLER, FRONT 3" DIA X 3 1/2"	1
13	50.0046	50.0046	TUBE, AXLE FRONT ROLLER	1
14	99.A05	99.A05	LOCKNUT, STOVER 5/16-18 USS	1
15	03.0006	03.0006	PIN, BALL 3/8 X 1"	2
16	00.0123	00.0123	DECAL, KEEP HANDS & FEET CLEAR	3
17	90.0414	90.0414	BOLT, 1/4-20 USS X 1 3/4	1
18	99.SF04	99.SF04	NUT, SRF 1/4-20 USS	4
19	97.0506	97.0506	BOLT, CARRIAGE 5/16 X 3/4	4
20	62.1304	62.0867	FRAME, TOP DECK PLATE	1
21	99.SF05	99.SF05	NUT, SRF 5/16-18 USS	4
22	99.A06	99.A06	LOCKNUT, STOVER 3/8-16 USS	2
23	00.0122	00.0122	DECAL, THROWN OBJECT HAZARD	1
24	60.0723	60.0766	CHUTE, SIDE DISCHARGE STEEL	1
25	90.0606	90.0606	BOLT, 3/8-16 USS X 3/4	2
26	41.0020	41.0020	SPRING, 4 1/4-EXT .765 OD	1
27	81.0134	81.0134	CHAIN, 1/8 PLATED 1 LINK	1
28	90.0408	90.0408	BOLT, 1/4-20 USS X 1	1
29	99.SF06	99.SF06	NUT, SRF 3/8-16 USS	6
30	00.0062	00.0062	DECAL, DANGER SHIELD MISSING	1
31	62.1303	62.0866	DECK, MAIN WELDMENT	1
32	99.SF0606		BOLT, SRF 3/8-16 USS X 3/4 (Serial # 1923-2237)	4
32		99.SF0606	BOLT, SRF 3/8-16 USS X 3/4 (Serial # 1335-1646)	4
33	64.0669		BRACKET, REAR SLIDE PLATES (Serial # 1923-2237)	2
33		64.0669	BRACKET, REAR SLIDE PLATES (Serial # 1335-1646)	2
34	95.06		WASHER, FLAT 3/8 SAE (Serial # 1923-2114)	1
34	99.G0014		WASHER, 3/8 USS FW .165 THK (Serial # 2115-2252)	1
34		95.06	WASHER, FLAT 3/8 SAE (Serial # 1335-1464)	1
34		99.G0014	WASHER, 3/8 USS FW .165 THK (Serial # 1465-1676)	1
35	60.1056		COVER, PULLEY (Serial # 2115-)	1
35		60.1056	COVER, PULLEY (Serial # 1465-)	1
36	90.0610		BOLT, 3/8-16 USS X 1-1/4 (Serial # 2238-)	4
36		90.0610	BOLT, 3/8-16 USS X 1-1/4 (Serial # 1647-)	4
37	64.1179		PLATE, REAR SLIDE RETAINER (Serial # 2238-)	4
37		64.1179	PLATE, REAR SLIDE RETAINER (Serial # 1647-)	4
38	64.1181		SPACER, REAR SLIDE (Serial # 2238-)	2
38		64.1181	SPACER, REAR SLIDE (Serial # 1647-)	2

PARTS

ILLUSTRATED DRAWING Carrier Frame



PARTS

Carrier Frame

REF.	LM520 PART NO.	LM600 PART NO.	DESCRIPTION	QTY.
1	60.0722	60.0767	SHIELD, MOWER DECK	1
2	00.0189	00.0189	DECAL, VENTRAC ORBITAL	1
3	00.0192	00.0192	DECAL, V-DECAL DIE CUT BLUE	1
4	62.0832	62.0868	FRAME, MAIN CARRIER	1
5	99.SF06	99.SF06	NUT, SRF 3/8-16 USS	9
6	94.06	94.06	WASHER, FLAT 3/8 USS	1
7	90.0620	90.0620	BOLT, 3/8-16 USS X 2 1/2	2
8	64.0798	64.0798	BUSHING, 7/16 X 3/4 X 1-1/2L	2
9	64.0682	64.0682	BRACKET, SHIELD SPRING	1
10	95.05	95.05	WASHER, FLAT 5/16 SAE	5
11	41.0021	41.0021	SPRING, COMP 1/2 OD X 2-3/4 LG	1
12	99.A05	99.A05	LOCKNUT, STOVER 5/16-18 USS	1
13	90.0524	90.0524	BOLT, 5/16-18 USS X 3	1
14	43.006	43.006	ROD END, 3/8 SPHERICAL	4
15	90.0612	90.0612	BOLT, 3/8-16 USS X 1 1/2	5
16	99.SF05	99.SF05	NUT, SRF 5/16-18 USS	2
17	93.06	93.06	NUT, 3/8-24 SAE	4
18	99.J0620NF	99.J0620NF	ROD, THREADED 3/8-24 X 2-1/2L	2
19	90.0514	90.0514	BOLT, 5/16-18 USS X 1 3/4	2
20	42.0418	42.0425	SHAFT, HEIGHT ADJUST CROSSBAR	1
21	99.A06	99.A06	LOCKNUT, STOVER 3/8-16 USS	5
22	41.0039	41.0039	SPRING, COMP. 9/16 OD X 5/8	1
23	64.0795	64.0795	BRACKET, HT SETTING CONTROL	1
24	64.0799	64.0799	BUSHING, PIPE 1/4 X 1-1/8L	2
25	95.06	95.06	WASHER, FLAT 3/8 SAE	2
26	90.0608	90.0608	BOLT, 3/8-16 USS X 1	1
27	40.0267	40.0267	LEVER, HEIGHT ADJUSTMENT	1
28	47.0086	47.0086	GRIP, SLIP-ON HANDLE - BLACK	1
29	64.0796	64.0796	PLATE, HEIGHT ADJUST INDEX	1
30	05.0062	05.0062	BUMPER, NEOPRENE 18-12 GA	2
31	99.SF0608	99.SF0608	BOLT, SRF 3/8-16 USS X 1	1
32	00.0100	00.0100	DECAL, MADE IN USA	1
33	00.0225	00.0225	DECAL, BELT DIAGRAM LM	1
34	99.G0014	99.G0014	WASHER, 3/8 USS FW .165 THK	4

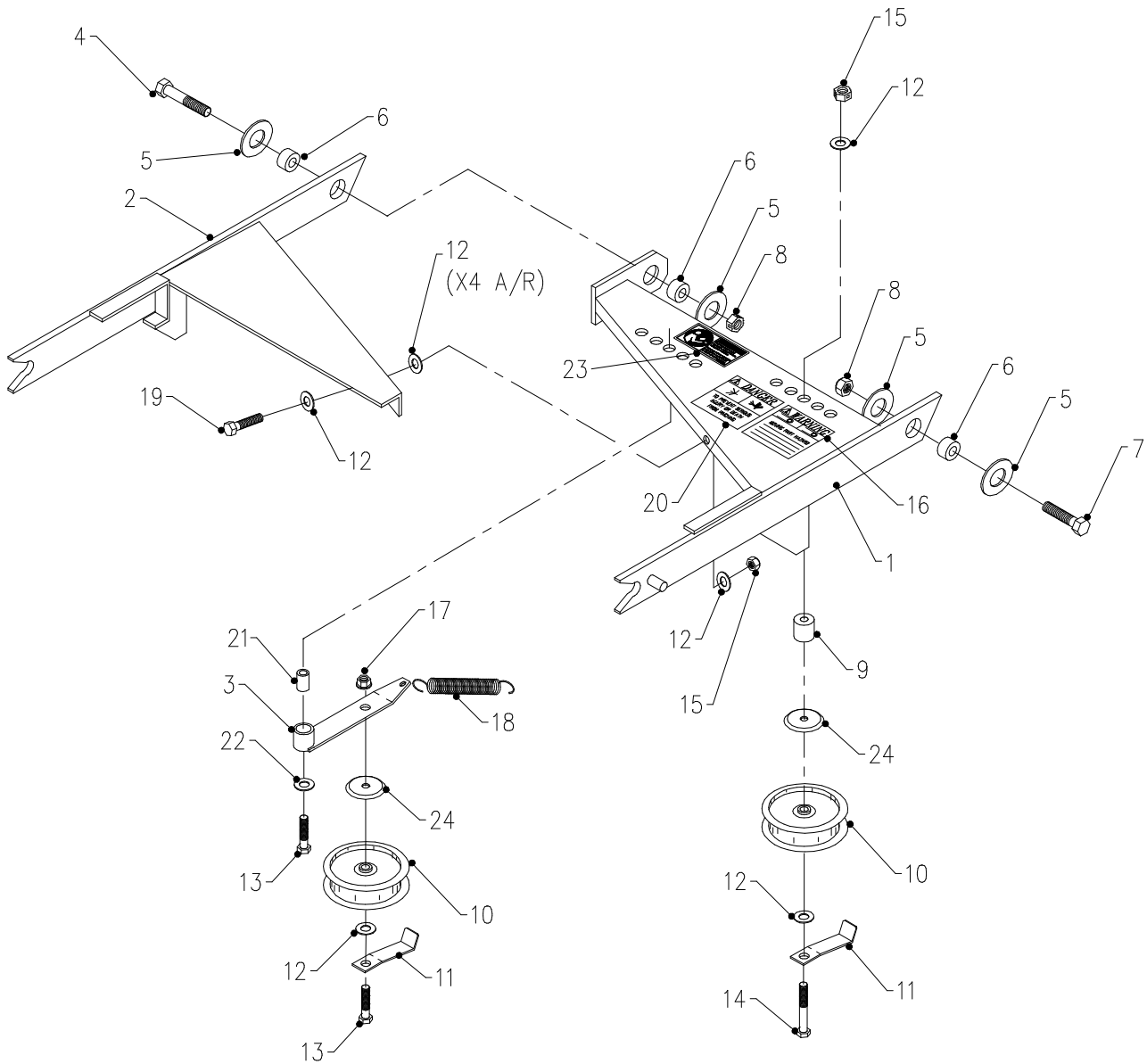
PARTS

Front Caster Wheels & Rear Roller

REF.	LM520 PART NO.	LM600 PART NO.	DESCRIPTION	QTY.
1	53.0080	53.0080	DUST CAP, BEARING MOWER CASTER	2
2	99.A12NF	99.A12NF	LOCKNUT, STOVER 3/4-16 SAE	2
3	55.0023	55.0023	BEARING, BALL .75 ID X 1.78 OD	4
4	04.0013	04.0013	SNAP RING, INT .062 X 1.75	2
5	99.B0052	99.B0052	SHIM, STEEL 3/4 X 1 X .062	2
6	99.B0057-2	99.B0057-2	WASHER, MACH3/4 X1-1/4 10GA ZP	4
7	99.A06N	99.A06N	LOCKNUT, NYLON 3/8-16	2
8	53.0093		WHEEL, ASM 9 X 3.50 X4 SMOOTH (Serial # 1923-2032)	2
8	53.0140		WHEEL, ASM 9 X 3.5 X4 FLATFREE (Serial # 2033-)	2
8		53.0093	WHEEL, ASM 9 X 3.50 X4 SMOOTH (Serial # 1335-1380)	2
8		53.0140	WHEEL, ASM 9 X 3.5 X4 FLATFREE (Serial # 1381-)	2
9	50.0055	50.0055	TUBE, AXLE-WHEEL LM	2
10	90.0644	90.0644	BOLT, 3/8-16 USS X 5 1/2	2
11	50.0185	50.0185	SPINDLE, TIRE SWIVEL 9"	2
12	04.0016		SNAP RING, EXT.1 SHFT .042 THK (Serial # 1923-2029)	2
12	04.0025		SNAP RING, EXT.1 SHFT .078 THK (Serial # 2030-)	2
12		04.0025	SNAP RING, EXT.1 SHFT .078 THK	2
13		64.0893	BUSHING, ROLLER (LM600 ONLY)	2
14	50.0056	50.0056	ROLLER, END 4" OD X 2.69" LONG	2
15	95.16	95.16	WASHER, FLAT 1 SAE	As Required
16	80.0300	80.0292	ROLLER, REAR	1
17	99.SF05	99.SF05	NUT, SRF 5/16-18 USS	4
18	55.FB16016	55.FB16016	BEARING, FLANGE BLOCK 1" REGZK	2
19	99.SF0508	99.SF0508	BOLT, SRF 5/16-18 USS X 1	4
20	95.12	95.12	WASHER, FLAT 3/4 SAE	As Required
21	29.GF0001	29.GF0001	GREASE FTG, 1/4 SAE ST	3
22	29.GF0002	29.GF0002	GREASE FTG, 1/4 SAE 90	1
23	99.B0093	99.B0093	WASHER, 1" ID X 1-1/2" OD 10GA	2
24	95.06	95.06	WASHER, FLAT 3/8 SAE	4
45	55.0060	55.0060	BEARING, DOUBLE-SEALED	2
50	55.0072	55.0072	BEARING, RETAINER 3/4"	2
51	55.0071	55.0071	BEARING, ROLLER 3.25" LONG	1
52	29.GF0001	29.GF0001	GREASE FTG, 1/4 SAE ST	1

PARTS

ILLUSTRATED DRAWING Hitch Assembly



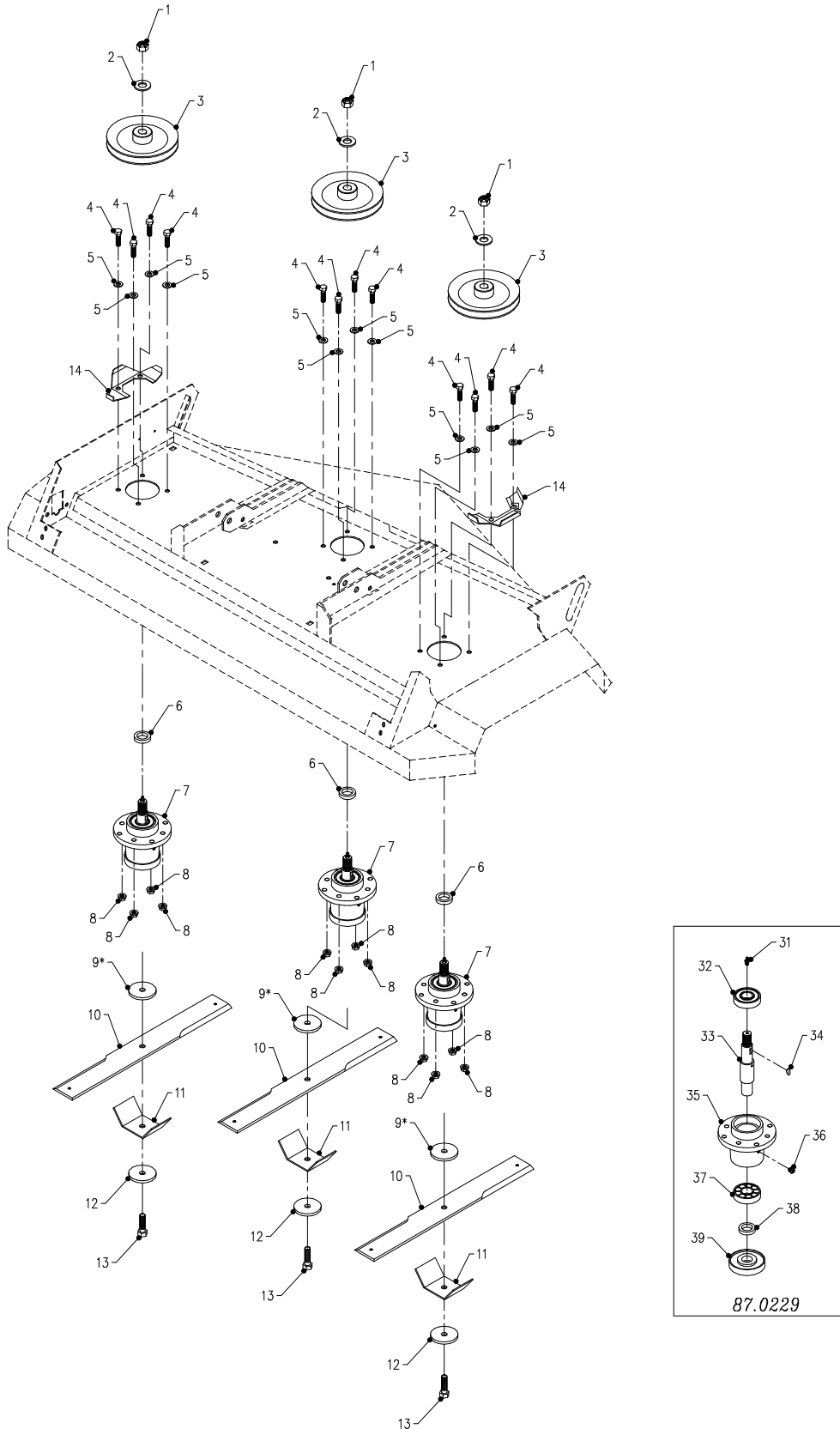
PARTS

Hitch Assembly

REF.	LM520 PART NO.	LM600 PART NO.	DESCRIPTION	QTY.
1	62.0833	62.0833	HITCH, RIGHT ARM	1
2	62.0834	62.0834	HITCH, LEFT ARM	1
3	40.0266	40.0266	ARM, IDLER MAIN DRIVE BELT	1
4	90.0816	90.0816	BOLT, 1/2-13 USS X 2	1
5	94.08	94.08	WASHER, FLAT 1/2 USS	4
6	85.SC08	85.SC08	SET COLLAR, 1/2"	3
7	90.0814	90.0814	BOLT, 1/2-13 USS X 1 3/4	1
8	99.A08	99.A08	LOCKNUT, STOVER 1/2-13 USS	2
9	64.0722	64.0722	BUSHING, STEEL 0.438 X 0.875	1
10	83.0037	83.0037	PULLEY, IDLER FLAT 4" X 3/8	2
11	60.0726	60.0726	BRACKET, IDLER BELT RETAINER	2
12	95.06	95.06	WASHER, FLAT 3/8 SAE	10
13	90.0614	90.0614	BOLT, 3/8-16 USS X 1 3/4	2
14	90.0620		BOLT, 3/8-16 USS X 2 1/2 (Serial # 1923-2114)	1
14	90.0622		BOLT, 3/8-16 USS X 2 3/4 (Serial # 2115-)	1
14		90.0620	BOLT, 3/8-16 USS X 2 1/2 (Serial # 1335-1464)	1
14		90.0622	BOLT, 3/8-16 USS X 2 3/4 (Serial # 1465-)	1
15	99.A06	99.A06	LOCKNUT, STOVER 3/8-16 USS	3
16	00.0101	00.0101	DECAL, HAZARD-MOVING PART	1
17	99.SF06	99.SF06	NUT, SRF 3/8-16 USS	1
18	41.0048	41.0048	SPRING, EXT. 1 OD X 6	1
19	90.0610	90.0610	BOLT, 3/8-16 USS X 1 1/4	1
20	00.0102	00.0102	DECAL, DANGER-PINCHING HAZARD	1
21	64.0797	64.0797	BUSHING, 7/16 X 3/4 X 1-1/16L	1
22	94.06	94.06	WASHER, FLAT 3/8 USS	1
23	00.0217	00.0217	DECAL, WARNING READ OWNERS MAN	1
24	60.1056		COVER, PULLEY (Serial # 2115-)	1
24		60.1056	COVER, PULLEY (Serial # 1465-)	1

PARTS

ILLUSTRATED DRAWING Spindles & Blades



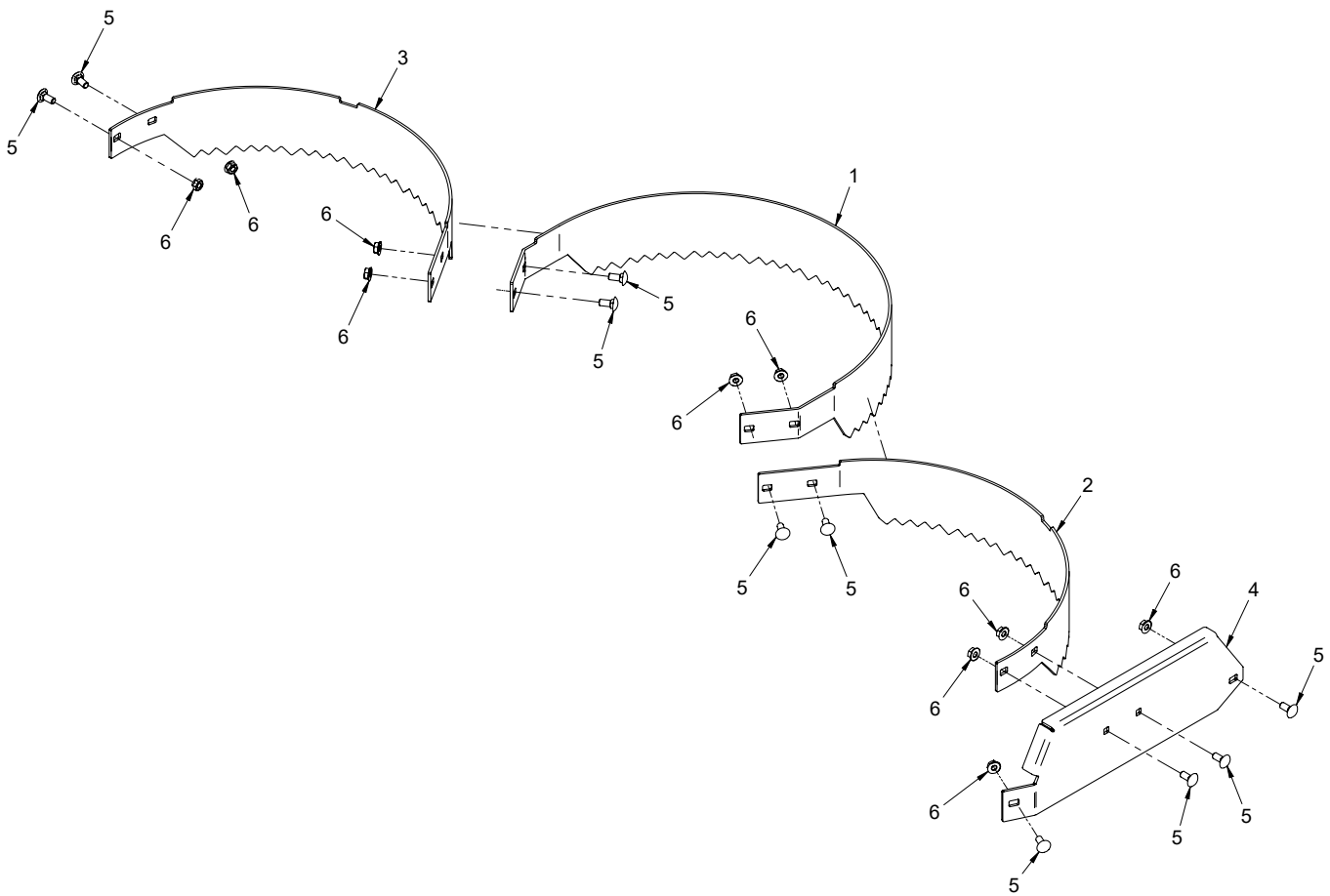
PARTS

Spindles & Blades

REF.	LM520 PART NO.	LM600 PART NO.	DESCRIPTION	QTY.
1	99.A12NF	99.A12NF	LOCKNUT, STOVER 3/4-16 SAE	3
2	99.B0057-2	99.B0057-2	WASHER, MACH3/4 X1-1/4 10GA ZP	3
3	83.BK5725M	83.0051	PULLEY, 25 MM STR. BORE	3
4	90.0612	90.0612	BOLT, 3/8-16 USS X 1 1/2	12
5	95.06	95.06	WASHER, FLAT 3/8 SAE	12
6	85.B0080	85.B0080	BUSHING, 1-1/2 OD, 1 ID	3
7	87.0229	87.0229	SPINDLE, ASM RH 25MM AL	3
8	99.E0082	99.E0082	NUT, LOCKING FLANGE 3/8 - 16	12
9		64.0863	SPACER, 2 OD X 17/32 ID X 3/8 (LM600 Only - Serial # 1335-1340)	3
9		99.B0091	WASHER, .510 ID X 2-1/2 OD 1/4 (LM600 Only - Serial # 1341-)	3
10	79.0039	79.0036	BLADE, RH LOWLIFT	3
10		79.0035	BLADE, RH HIGHLIFT (optional)	3
10	79.0057	79.0051	BLADE, RH MULCH (optional)	3
11	64.2002	64.2002	GUARD, SPINDLE/ANTI-STRING	3
12	99.B0091	99.B0091	WASHER, .510 ID X 2-1/2 OD 1/4	3
13	91.0814-8		BOLT, 1/2-20 X 1-3/4 GR8	3
13		91.0816-8	BOLT, 1/2-20 X 2 GR8	3
14	60.0725	60.0768	BRACKET, BELT RETAINER	2
31	29.GF0001	29.GF0001	GREASE FTG, 1/4 SAE ST	1
32	55.0057	55.0057	BEARING, BALL 25 MM X 62 MM	1
33	87.0209-2	87.0209-2	SHAFT, SPINDLE RH THREAD 25MM	1
34	85.W0406	85.W0406	KEY, WOODRUFF 1/4 X 3/4	1
35	87.0209-1	87.0209-1	SPINDLE, HOUSING	1
36	29.GF0017	29.GF0017	RELIEF FITTING	1
37	55.0035	55.0035	BEARING, BALL 25 MM X 62 MM	1
38	85.B0082	85.B0082	BUSHING, SPINDLE SHAFT SPACER	1
39	87.0210	87.0210	SPINDLE, FLANGE SHIELD	1

PARTS

ILLUSTRATED DRAWING 39.35150 LM520 Mulching Kit 39.35151 LM600 Mulching Kit



PARTS

39.35150 LM520 Mulching Kit

39.35151 LM600 Mulching Kit

REF.	LM520 PART NO.	LM600 PART NO.	DESCRIPTION	QTY.
1	64.0801	64.0872	RING, CENTER MULCHING	1
2	64.0802	64.0873	RING, MULCHING RIGHT	1
3	64.0803	64.0874	RING, MULCHING LEFT	1
4	60.0724	60.0770	PLATE, RIGHT END	1
5	97.0506	97.0506	BOLT, CARRIAGE 5/16 X 3/4	10
6	99.SF05	99.SF05	NUT, SRF 5/16-18 USS	10

WARRANTY



LIMITED WARRANTY - VENTRAC COMMERCIAL EQUIPMENT

Venture Products, Inc., (henceforth referred to as V.P.I.) warrants on the terms and conditions herein, that it will repair, replace, or adjust any part manufactured by Venture Products Inc., and found by Venture Products, Inc., to be defective in material and/or workmanship during the applicable warranty term.

All Ventrac commercial equipment purchased and registered on or after January 1, 2019 will carry a 2-year commercial warranty. The warranty period begins on the date of original customer purchase:

Ventrac Commercial Equipment	Warranty Term
2100 SSV & Attachments	2-year
3000 Series Tractors & Attachments	2-year
4000 Series Tractors & Attachments	2-year

All Ventrac add-on kits and accessories such as: 3-point hitch, 12V front & rear power outlets, foot pedal, dual wheel kit, etc., will be covered under the above warranty periods provided they are installed by an Authorized Ventrac Dealer. This warranty may be transferred and will carry the remainder of the warranty starting from the original purchase/registration date with the dealership and/or V.P.I.

The engine warranty is covered by its respective engine manufacturer. Please refer to the engine manufacturer's warranty statement that is included in the owner's manual.

For warranty consideration on Ventrac commercial equipment, including any defective part, must be returned to an Authorized Ventrac Dealer within the warranty period. The warranty shall extend to the cost to repair or replace (as determined by V.P.I.) the defective part. The expense of pickup and delivery of equipment, service call drive time or any transportation expense incurred for warranty repair is the sole responsibility of the owner and is not covered under warranty by Ventrac and/or V.P.I. Ventrac and V.P.I.'s responsibility in respect to claims is limited to making the required repairs or replacements, and no claim of breach of warranty shall be cause for cancellation or rescission of the contract of sale of any Ventrac equipment. Proof of purchase may be required by the dealer to substantiate any warranty claim. Only warranty work performed and submitted by an Authorized Ventrac Dealer may be eligible for warranty credit.

This warranty extends only to Ventrac commercial equipment operated under normal conditions and properly serviced and maintained. The warranty expressly does NOT cover: (a) any defects, damage or deterioration due to normal use, wear and tear, or exposure; (b) normal maintenance services, such as cleaning, lubrication, oil change; (c) replacement of service items, such as oil, lubricants, spark plugs, belts, rubber hoses, bearings or other items subject to normal service replacement; (d) damage or defects arising out of, or relating to abuse, misuse, neglect, alteration, negligence or accident; (e) repair or replacement arising from operation of, or use of the equipment which is not in accordance with operating instructions as specified in the operator's manual or other operational instructions provided by V.P.I.; (f) repair or replacement arising as a result of any operation from Ventrac equipment that has been altered or modified so as to, in the determination of V.P.I., adversely affect the operation, performance or durability of the equipment or that has altered, modified or affected the equipment so as to change the intended use of the product; (g) repair or replacement necessitated by the use of parts, accessories or supplies, including gasoline, oil or lubricants, incompatible with the equipment or other than as recommended in the operator's manual or other operational instructions provided by V.P.I.; (h) repairs or replacements resulting from parts or accessories which have adversely affected the operation, performance or durability of the equipment; or (i) damage or defects due to or arising out of repair of Ventrac equipment by person or persons other than an authorized Ventrac service dealer or the installation of parts other than genuine Ventrac parts or Ventrac recommended parts.

WARRANTY



LIMITED WARRANTY - VENTRAC COMMERCIAL EQUIPMENT

The sole liability of V.P.I. with respect to this warranty shall be the repair and replacement as set forth herein. V.P.I. shall have no liability for any other cost, loss, or damage. In particular V.P.I. shall have no liability or responsibility for: (i) expenses relating to gasoline, oil, lubricants; (ii) loss, cost or expense relating to transportation or delivery of turf equipment from the location of owner or location where used by owner to or from any Authorized Ventrac Dealer; (iii) travel time, overtime, after hours' time or other extraordinary repair charges or charge relating to repairs or replacements outside of normal business hours at the place of business of an Authorized Ventrac Dealer; (iv) rental of like or similar replacement equipment during the period of any warranty repair or replacement work; (v) any telephone or telegram charges; (vi) loss or damage to person or property other than that covered by the terms of this warranty; (vii) any claims for lost revenue, lost profit or additional cost or expense incurred as a result of a claim of breach of warranty; or (viii) attorney's fees.

The remedies of buyer set forth herein are exclusive and are in lieu of all other remedies. The liability of V.P.I., whether in contract, tort, under any warranty, or otherwise, shall not extend beyond its obligation as set forth herein. V.P.I. shall not be liable for cost of removal or installation nor shall V.P.I. be responsible for any direct, indirect, special or consequential damages of any nature. In no event shall V.P.I. be liable for any sum in excess of the price received for the goods for which liability is claimed.

There are no representations or warranties which have been authorized to the buyer of the Ventrac commercial equipment other than set forth in this warranty. Any and all statements or representations made by any seller of this equipment, including those set forth in any sales literature or made orally by any sales representative, are superseded by the terms of this warranty. Any affirmation of fact or promise made by V.P.I. or any of its representatives to the buyer which relates to the goods that are the subject to this warranty shall not be regarded as part of the basis of the bargain and shall not be deemed to create any express warranty that such goods shall conform to the affirmation or promise.

No employee, distributor, or representative is authorized to change the foregoing warranties in any way or grant any other warranty on behalf of V.P.I.

Some states do not allow limitations on how long an implied warranty lasts or allow the exclusion on limitation of incidental or consequential damages, so the above limitation or exclusion may not apply to you.

This warranty gives you specific legal rights, and you may also have other rights which vary from state to state.

This warranty applies to all Ventrac commercial equipment sold by Venture Products Inc.