

Parts Manual

# KL480

Tiller



Revised 04/23/24  
09.20063 Rev. 01



500 Venture Drive  
Orrville Oh 44667  
www.ventrac.com

## Serial Number Description



Serial Plate Location



## Notes

- If any component requires replacement, use only original Ventrac replacement parts.
- When ordering new components, be sure to order all required safety decals. All current safety decals must be affixed to the replacement components prior to installation of the component.

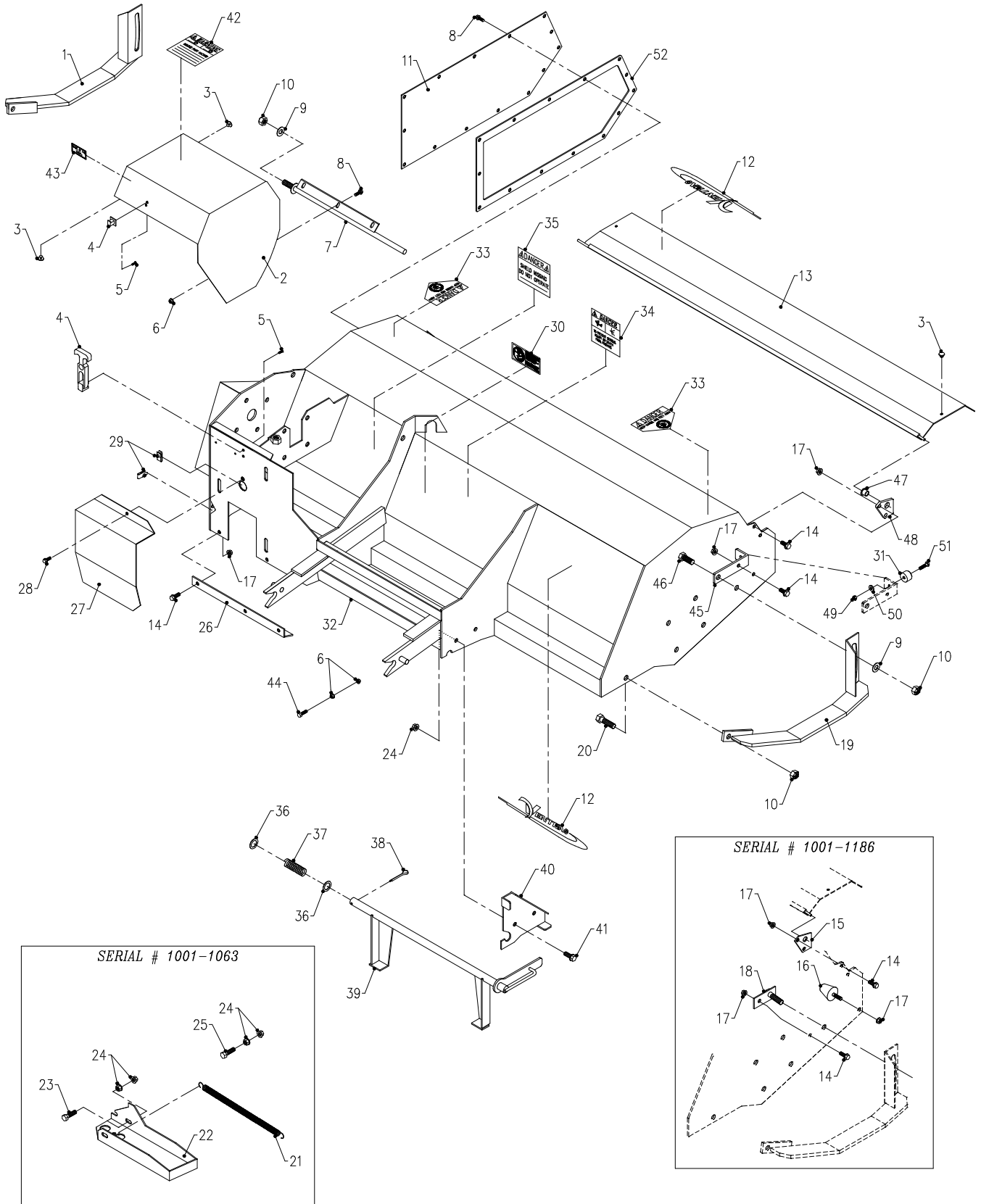
# TABLE OF CONTENTS

---

| <b>PARTS</b>               | <b>PAGE 4</b> |
|----------------------------|---------------|
| Main Frame & Shields ..... | 4             |
| Gearbox & Belt Drive ..... | 6             |
| Rotor & Chain Drive .....  | 8             |

# PARTS

## ILLUSTRATED DRAWING Main Frame & Shields



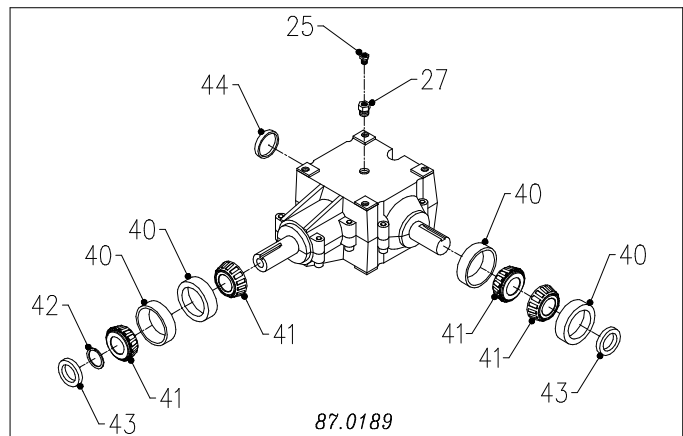
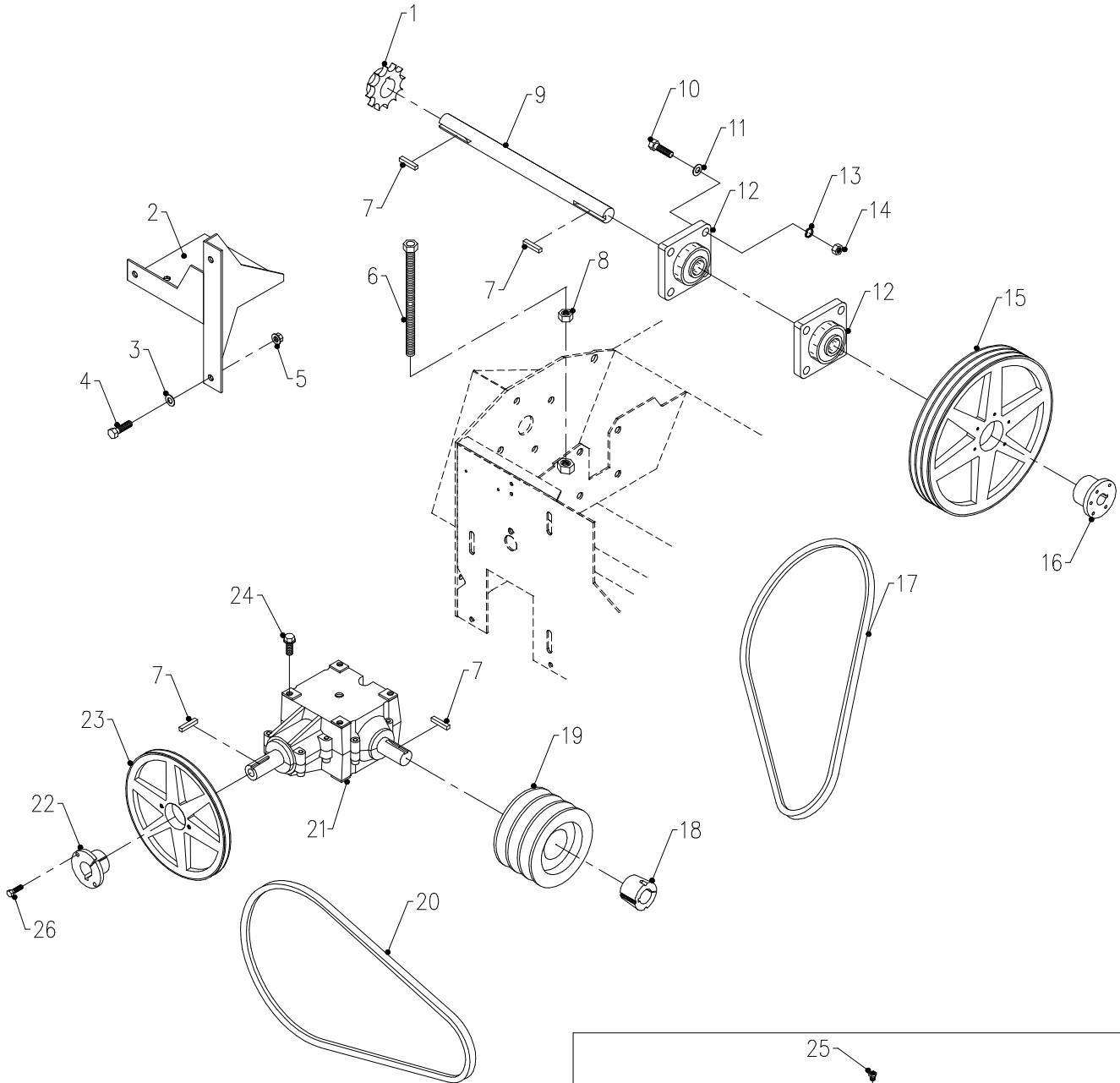
# PARTS

## Main Frame & Shields

| REF. | PART NO.    | DESCRIPTION  | QTY. |
|------|-------------|--|------|
| 1    | 62.0896     | .SHOE, SKID LEFT KL480                                 | 1    |
| 2    | 60.0786     | .COVER, BELTS & GEARBOX KL480                          | 1    |
| 3    | 05.0062     | .BUMPER, RUBBER SOLID STEM                             | 6    |
| 4    | 47.0127     | .LATCH, RUBBER DRAW T-HANDLE                           | 1    |
| 5    | 99.K0072    | .MACHINE SCREW, 10-24 X 1/2 ZP.                        | 3    |
| 6    | 99.SF04     | .NUT, SF 1/4-20 USS                                    | 5    |
| 7    | 42.0434     | .SHAFT, PIVOT - COVER KL480                            | 1    |
| 8    | 99.SF0404-1 | .BOLT, SF 1/4-20 X 1/2 W/RUBBER                        | 17   |
| 9    | 95.08       | .WASHER, FLAT 1/2 SAE                                  | 3    |
| 10   | 99.A08      | .LOCKNUT, STOVER 1/2-13 USS                            | 5    |
| 11   | 60.0787     | .COVER, CHAIN KL480                                    | 1    |
| 12   | 00.0189     | .DECAL, VENTRAC ORBITAL                                | 2    |
| 13   | 60.0785     | .FLAP, DIRT KL480                                      | 1    |
| 14   | 99.SF0506   | .BOLT, SF 5/16-18 USS X 3/4                            | 9    |
| 15   | 64.0907     | .BRACKET, DIRT FLAP MOUNT KL480 (Serial # 1001-1186)   | 4    |
| 16   | 05.0061     | .BUMPER, RUBBER CONICAL (Serial # 1001-1186)           | 2    |
| 17   | 99.SF05     | .NUT, SF 5/16-18 USS                                   | 11   |
| 18   | 64.0911     | .BRACKET, SHOE ANCHOR KL480 (Serial # 1001-1186)       | 2    |
| 19   | 62.0895     | .SHOE, SKID RIGHT KL480                                | 1    |
| 20   | 90.0808     | .BOLT, 1/2-13 USS X 1                                  | 2    |
| 21   | 41.0045     | .SPRING, 3/4 X 12 EXT .092-WIRE (Serial # 1001-1063)   | 1    |
| 22   | 60.0789     | .LEG, PARK KL480 (Serial # 1001-1063)                  | 1    |
| 23   | 90.0612     | .BOLT, 3/8-16 USS X 1 1/2                              | 3    |
| 24   | 99.SF06     | .NUT, SF 3/8-16 USS                                    | 8    |
| 25   | 90.0616     | .BOLT, 3/8-16 USS X 2                                  | 1    |
| 26   | 64.0906     | .STIFFENER, HOUSING KL480                              | 1    |
| 27   | 60.0788     | .COVER, BELT KL480                                     | 1    |
| 28   | 99.SF0405-1 | .BOLT, SF 1/4-20 X 5/8 W/RUBBER                        | 2    |
| 29   | 99.E0046    | .NUT, "U" 1/4-20 EXTRUDED                              | 2    |
| 30   | 00.0217     | .DECAL, WARNING READ OWNERS MAN (Serial # 1001-1928)   | 1    |
| 30   | 00.0619     | .DECAL, READ OPERATOR'S MANUAL (Serial # 1929 -)       | 1    |
| 31   | 05.0095     | .BUMPER, RUBBER CYLINDRICAL (Serial # 1187 -)          | 2    |
| 32   | 62.0893     | .FRAME, MAIN KL480                                     | 1    |
| 33   | 00.0123     | .DECAL, KEEP HAND AND FEET AWAY (Serial # 1001-1928)   | 2    |
| 33   | 00.0703     | .DECAL, CUTTING/DISMEMBERMENT HAZARD (Serial # 1929 -) | 2    |
| 34   | 00.0102     | .DECAL, DANGER-PINCHING HAZARD (Serial # 1001-1928)    | 1    |
| 34   | 00.0620     | .DECAL, PINCHING OR CRUSHING HAZARD (Serial # 1929 -)  | 1    |
| 35   | 00.0062     | .DECAL, DANGER SHIELD MISSING (Serial # 1001-1928)     | 1    |
| 35   | 00.0625     | .DECAL, SHIELD MISSING (Serial # 1929 -)               | 1    |
| 36   | 95.12       | .WASHER, FLAT 3/4 SAE                                  | 2    |
| 37   | 41.0073     | .SPRING, COMP 13/16 ID X 2-1/2L (Serial # 1064 -)      | 1    |
| 38   | 02.CP0508   | .COTTER PIN, 5/32 X 1                                  | 1    |
| 39   | 62.1003     | .STAND, JACK KL480 (SERIAL # 1064 -)                   | 1    |
| 40   | 60.0880     | .PLATE, JACK STAND MOUNTING (Serial # 1064 -)          | 1    |
| 41   | 99.SF0606   | .BOLT, SF 3/8-16 USS X 3/4                             | 2    |
| 42   | 00.0101     | .DECAL, HAZARD-MOVING PART (Serial # 1001-1928)        | 1    |
| 42   | 00.0626     | .DECAL, ENTANGLEMENT HAZARD (Serial # 1929 -)          | 1    |
| 43   | 00.0770     | .DECAL, MADE IN USA                                    | 1    |
| 44   | 90.0414     | .BOLT, 1/4-20 USS X 1 3/4                              | 1    |
| 45   | 64.1372     | .BRACKET, BUMPER (SERIAL # 1187 -)                     | 2    |
| 46   | 90.0810     | .BOLT, 1/2-13 USS X 1 1/4                              | 2    |
| 47   | 85.B0027    | .BUSHING, 1/2 ID X 5/8 OD X 5/8 (Serial # 1187 -)      | 2    |
| 48   | 64.1373     | .MOUNT, DIRT FLAP (Serial # 1187 -)                    | 2    |
| 49   | 99.A04      | .LOCKNUT, STOVER 1/4-20 USS                            | 2    |
| 50   | 95.04       | .WASHER, FLAT 1/4 SAE                                  | 2    |
| 51   | 90.0408     | .BOLT, 1/4-20 USS X 1                                  | 2    |
| 52   | 44.0268     | .GASKET, OIL SEAL (Serial # 1234-)                     | 1    |

# PARTS

## ILLUSTRATED DRAWING Gearbox & Belt Drive



87.0189

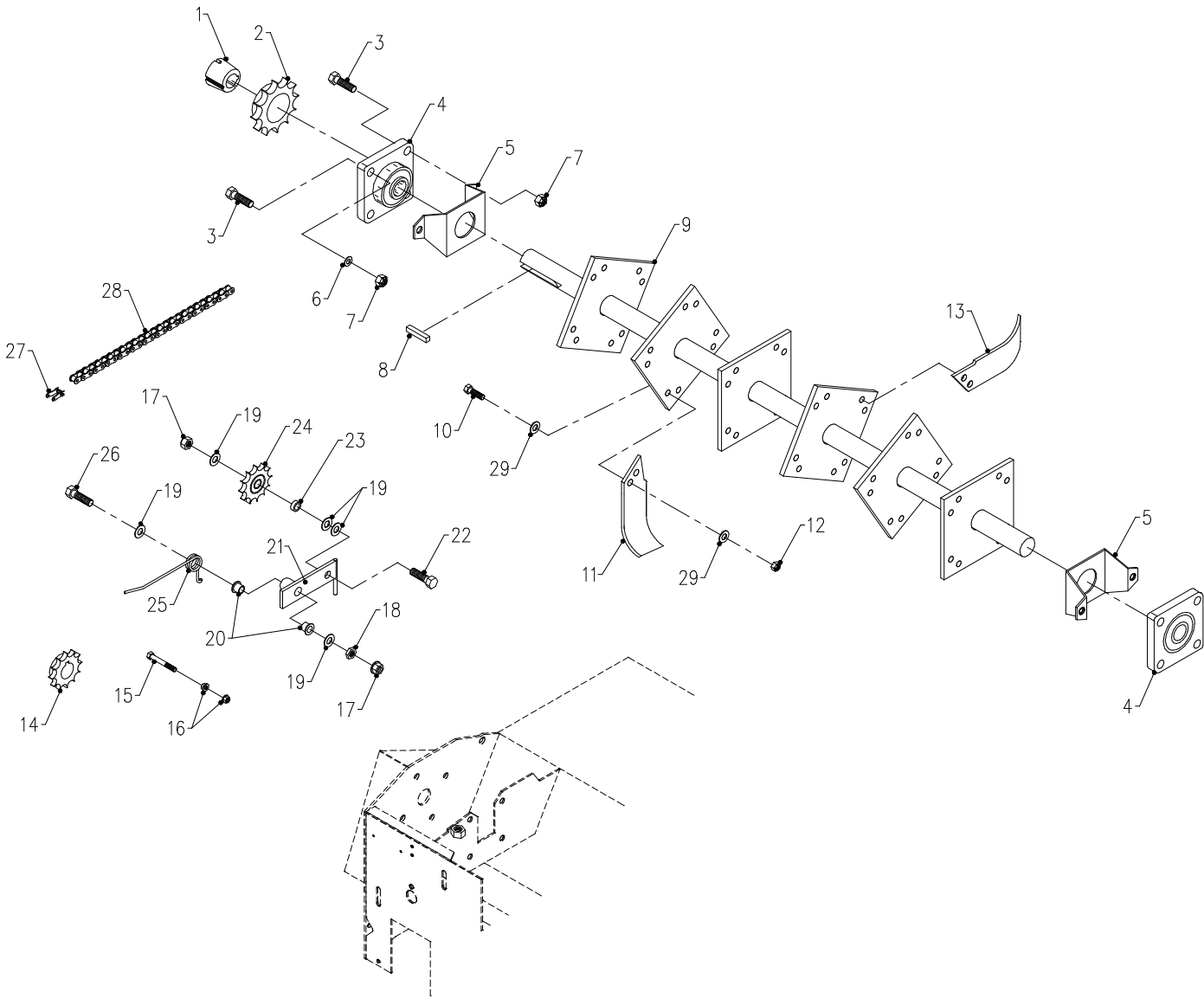
# PARTS

## Gearbox & Belt Drive

| REF. | PART NO.    | DESCRIPTION  | QTY. |
|------|-------------|--|------|
| 1    | 83.H800920  | .SPROCKET,#80 9-T HRD 1-1/4 BOR                    | 1    |
| 2    | 62.0894     | .PLATE, GEARBOX MOUNT KL480                        | 1    |
| 3    | 95.06       | .WASHER, FLAT 3/8 SAE                              | 3    |
| 4    | 90.0606     | .BOLT, 3/8-16 USS X 3/4                            | 3    |
| 5    | 99.SF06     | .NUT, SF 3/8-16 USS                                | 3    |
| 6    | 90.0864-4   | .BOLT, 1/2-13 X 8 304SS                            | 1    |
| 7    | 85.K0410    | .KEY, 1/4 X 1 1/4                                  | 4    |
| 8    | 92.08       | .NUT, 1/2-13 USS                                   | 1    |
| 9    | 80.0311     | .SHAFT, JACK KL480                                 | 1    |
| 10   | 90.0712     | .BOLT, 7/16-14 USS X 1 1/2                         | 8    |
| 11   | 95.07       | .WASHER, FLAT 7/16 SAE                             | 8    |
| 12   | 55.FB22020S | .BEARING, FLANGE 1-1/4S                            | 2    |
| 13   | 96.07       | .WASHER, LOCK 7/16                                 | 8    |
| 14   | 92.07       | .NUT, 7/16-14 USS                                  | 8    |
| 15   | 83.3TB94    | .PULLEY, 3-GROOVE X 9.4" DIA                       | 1    |
| 16   | 83.Q120     | .BUSHING, 1 1/4" Q1                                | 1    |
| 17   | 81.BX035    | .BELT, BX35  | 1    |
| 18   | 83.121016   | .BUSHING, 1210 X 1" TAPERD LOCK                    | 1    |
| 19   | 83.3TB36TB  | .PULLEY, 3B 3.6" TB-BUSHING                        | 1    |
| 20   | 81.B066     | .BELT, B66   | 1    |
| 21   | 87.0189     | .GEARBOX, 1" SHAFT 2:1 CW/CCW (SERIAL # 1001-1168) | 1    |
| 21   | 87.0219     | .GEARBOX, CW/CCW 1" SHAFT 2:1 (SERIAL # 1169-1228) | 1    |
| 21   | 87.0189     | .GEARBOX, 1" SHAFT 2:1 CW/CCW (SERIAL # 1229-)     | 1    |
| 22   | 83.H16S     | .BUSHING, 1" SPLIT 1/4" KEY                        | 1    |
| 23   | 83.BK80H    | .PULLEY, 8" H-BUSH                                 | 1    |
| 24   | 99.SF0608   | .BOLT, SF 3/8-16 USS X 1                           | 4    |
| 25   | 29.0090     | .PIPE, BREATHER PLUG 1/8                           | 1    |
| 26   | 90.0406     | .BOLT, 1/4-20 USS X 3/4                            | 2    |
| 27   | 29.B0204G   | .PIPE, BUSHING 1/8 X 1/4 GALV                      | 1    |
| 40   | 55.0076     | .BEARING, CUP 1.980                                | 4    |
| 41   | 55.0075     | .BEARING, CONE 1.000                               | 4    |
| 42   | 04.0026     | .RETAINING RING, EXT 1.000 SHFT.                   | 1    |
| 43   | 89.0075     | .SEAL, OIL   | 2    |
| 44   | 89.0081     | .SEAL, END CAP 1.50-25                             | 1    |

# PARTS

## ILLUSTRATED DRAWING Rotor & Chain Drive





# PARTS

## Rotor & Chain Drive

| REF. | PART NO.    | DESCRIPTION                      | QTY. |
|------|-------------|----------------------------------|------|
| 1    | 83.161524   | .BUSHING, 1615 X 1-1/2 TAPERLOC  | 1    |
| 2    | 83.H80TB15  | .SPROCKET, #80 15-T HRD          | 1    |
| 3    | 90.0812     | .BOLT, 1/2-13 USS X 1 1/2        | 8    |
| 4    | 55.FB22024  | .BEARING, FLANGE BLOCK 1 1/2     | 2    |
| 5    | 64.0908     | .PROTECTOR, 1-1/2 BEARING KL     | 2    |
| 6    | 95.08       | .WASHER, FLAT 1/2 SAE            | 4    |
| 7    | 99.A08      | .LOCKNUT, STOVER 1/2-13 USS      | 8    |
| 8    | 85.K0610    | .KEY, 3/8 X 1 1/4                | 1    |
| 9    | 80.0310     | .SHAFT, MAIN ROTOR KL480         | 1    |
| 10   | 91.0712-8   | .BOLT, 7/16-20 SAE X 1-1/2 GRD8  | 48   |
| 11   | 79.0049-L   | .TINE, TILLER L.H.               | 12   |
| 12   | 99.A07NFN-8 | .LOCKNUT, NYLON 7/16-20 SAE, GR8 | 48   |
| 13   | 79.0049-R   | .TINE, TILLER R. H.              | 12   |
| 14   | 83.H800920  | .SPROCKET,#80 9-T HRD 1-1/4 BOR  | 1    |
| 15   | 90.0514     | .BOLT, 5/16-18 USS X 1 3/4       | 1    |
| 16   | 99.SF05     | .NUT, SF 5/16-18 USS             | 2    |
| 17   | 99.SF08     | .NUT, SF 1/2-13 USS              | 2    |
| 18   | 99.E0058    | .NUT, JAM 1/2-13 USS             | 1    |
| 19   | 95.08       | .WASHER, FLAT 1/2 SAE            | 5    |
| 20   | 85.B0027    | .BUSHING, 1/2 ID X 5/8 OD X 5/8  | 2    |
| 21   | 40.0290     | .IDLER ARM, CHAIN KL480          | 1    |
| 22   | 90.0814     | .BOLT, 1/2-13 USS X 1 3/4        | 1    |
| 23   | 85.B0015    | .BUSHING, 1/2 ID X 3/4 OD X 1/2  | 1    |
| 24   | 83.8011012  | .SPROCKET, IDLER #80 11-T        | 1    |
| 25   | 41.0066     | .SPRING, SINGLE TORSION LH       | 1    |
| 26   | 90.0824     | .BOLT, 1/2-13 USS X 3            | 1    |
| 27   | 81.0059     | .LINK, CONN #80                  | 1    |
| 28   | 81.0138     | .CHAIN, ROLLER #80 X 44" KL480   | 1    |
| 29   | 95.07       | .WASHER, FLAT 7/16 SAE           | 96   |