



OWNER/OPERATOR'S MANUAL & PARTS LIST

SNOW BLOWER

Model LX420



Revised 01/08/20
09.10039



Orrville, OH
www.ventrac.com

TO THE OWNER

Product Identification

If you need to contact an Authorized Ventrac Dealer for information on servicing your product, always provide the Product Model and Serial numbers.

Please fill in the following information for future reference. See picture below to find the location of the identification number. Record them in the spaces provided below.

Date of Purchase: Month _____ Day _____ Year _____

Dealer: _____

Dealer Address: _____

Dealer Phone Number: _____

Dealer FAX Number: _____

Model # (A): _____

Serial # (B): _____

Affix Part/Serial Number label here

Venture Products Inc. reserves the right to make changes in design or specifications without obligation to make like changes on previously manufactured products.

TABLE OF CONTENTS

INTRODUCTION	SECTION A
Description & Specifications	A-1
SAFETY	SECTION B
Safety Symbols	B-1
Decals	B-2
General Safety Procedures	B-3
Safety Operation & Techniques	B-4
OPERATION	SECTION C
Attaching	C-1
Detaching	C-2
Operating Techniques & Tips	C-2
MAINTENANCE/ADJUSTMENTS	SECTION D
Bearing Lubrication	D-1
Gearbox Lubrication	D-1
Belt Replacement	D-1
Chute Adjustment	D-2
Skid Shoe Adjustment	D-2
PARTS & ILLUSTRATED DRAWINGS	SECTION E
Main Frame & Auger Drive	E-1 & 2
Main Drive & Fan Drive	E-3 & 4
Chute & Hydraulics	E-5 & 6
Shields & Decals	E-7 & 8
Cutting Edge, Bump Bar, & Skid Shoes	E-9 & 10
PARTS/OPTIONS	SECTION F
12 Volt Actuator Deflector Control	F-1 & 2
Weight Transfer for LT3000 Tractors	F-3 & 4
WARRANTY	

INTRODUCTION

Product Description LX420 Snow Blower

The Ventrac Model LX420 Snow Blower is a powerful, high capacity, two-stage snow blower. It combines an aggressive sixteen inch auger with a heavy duty, high speed fan to make a powerful and efficient snow removing attachment for the Ventrac 3000 series tractors.

The LX420 Snow Blower features:

- a hydraulic motor that rotates the chute 220 degrees.
- a reversible, hardened cutting edge.
- quick attach mounting to the tractor.
- adjustable skid shoes.
- optional 12 volt actuator to control the chute deflector angle.

Ventrac LX420 Specifications

Overall Height	52-1/2 inches
Overall Length	43 inches
Overall Width	42 inches
Weight	360 pounds
Auger Opening Width	38 inches
Auger Diameter	16 inches
Fan Diameter	19-1/2 inches

Venture Products, Inc. reserves the right to change these specifications without notice.

SAFETY



ATTENTION:

This symbol identifies potential health and safety hazards. It marks safety precautions. Your safety and the safety of others is involved.

SIGNAL WORD DEFINITIONS

DANGER

Indicates an imminently hazardous situation which, if not avoided, will result in death or serious injury. This signal word is limited to the most extreme cases.

WARNING

Indicates a potentially hazardous situation which, if not avoided, could result in death or serious injury.

CAUTION

Indicates a potentially hazardous situation which, if not avoided, may result in minor or moderate injury and/or property damage. It may also be used to alert against unsafe practices.

SAFETY

The following decals must be maintained on your Ventrac Attachment. If any decals are faded or missing, contact your dealer promptly for replacements.



A



B



C



D



E



F



G

Decal	Page & Location	Description	Part Number
A	E-7, #5	DECAL, DANGER SHIELD MISSING	00.0062
B	E-7, #18	DECAL, HAZARD-MOVING PART	00.0101
C	E-7, #17	DECAL, THROWN OBJECT HAZARD	00.0122
D	E-5, #34 (2)	DECAL, KEEP HAND AND FEET AWAY	00.0123
E	E-7, #6 (2)	DECAL, DANGER AUGER HAZARD	00.0208
F	E-7, #23	DECAL, WARNING READ OWNERS MAN	00.0217
G	E-7, #23	DECAL, GENERAL SAFETY	00.0220

SAFETY



General Safety Procedures for Ventrac Tractors, Attachments, & Accessories



Read and understand the operator's manual before operating this equipment.

Observe and follow all safety decals.

DO NOT let children or any untrained person operate the tractor or attachment. Make sure that all operators of this equipment are thoroughly trained in using it safely.

Never allow additional riders on the tractor or attachments.

DO NOT operate tractor or attachments if you are under the influence of alcohol, drugs, or medication that may impair judgment or cause drowsiness, or if you are not feeling well.

Operate all controls from the operator's seat only.

Before operating equipment, make sure all shields are in place and fastened.

Ensure the attachment or accessory is locked or fastened securely to the tractor before operating. See tractor manual for locking procedure.

Ensure that all bystanders are clear of the tractor and attachment before operating. Be especially careful and observant if other people are present. Never assume that bystanders will remain where you last saw them.

Always look in the direction the tractor is moving.

Never direct the discharge of any attachment in the direction of people, animals, buildings, vehicles, or objects of value.

Stop operation immediately at any sign of equipment failure and correct the problem before continuing to operate. An unusual noise can be a warning of equipment failure or a sign that maintenance is required.

Before adjusting, cleaning, lubricating, or changing parts on the tractor or attachment, engage the parking brake, lower the attachment to the ground, stop the engine, and remove the ignition key.

To prevent the risk of uncontrolled equipment movement on tractors equipped with 2 speed axles, always shift the transaxle range with the tractor stationary on level ground and with the parking brake engaged.

If equipment is to be left unattended, engage the parking brake, lower the attachment to the ground, stop the engine, and remove the ignition key.

SAFETY

LX420 Safety Procedures

⚠ WARNING

Before making any repairs or adjustments, engage the parking brake, lower attachment to the ground, shut the engine off, and remove the key.

⚠ WARNING

Read and understand the operator's manual before operating this equipment.

⚠ WARNING

Never direct the snow blower discharge chute toward people, animals, buildings, vehicles, or other personal property. Debris can be thrown from the chute causing damage, serious injury, or death.

⚠ WARNING

Before operating any LX420 prior to serial AB1135 with a LE3100 or LE3200 that is equipped with a tractor cab, a new center post (Kit #70.3022) must be installed, or the tractor cab must be removed. Damage may occur to the cab if proper precaution is not followed.



See Warning Above
Before Operating the
LX420 with a LE Cab!

Never operate snow blower when people are in the area. Frozen snow, ice, gravel, and other objects can be thrown at lethal velocity.

Operators should be familiar with the area they are clearing and make preparations ahead of time. Place guide stakes appropriately and remove stones, markers, or other debris that may be hidden after a snowfall. Curbs, offsets, steps, man hole covers, broken or raised pavement, etc. should be noted. Operators should map areas to be cleared before the winter season so they can review potential hazards prior to clearing snow in the area.

If an area is to be cleared that is unfamiliar to the operator, travel slowly and use **EXTREME CAUTION**. Inquire of anyone who might know of potential hazards.

The operator should never proceed if visibility is poor. If the tractor is equipped with a cab, the windshield must be kept clean.

Discharge snow with the wind direction as much as possible. Discharging into the wind reduces blowing distance and visibility.

Use caution when operating around objects that can obstruct your vision.

Shut off the PTO when you are not blowing snow.

Always shut off the PTO and engage the parking brake before dismounting to change the angle of the discharge chute deflector.

Never travel at speeds that would cause injury to the operator or damage to the machine, if the machine were to be stopped suddenly by an unseen, immovable object.

OPERATION

Attaching

1. Drive the tractor slowly forward into the hitch arms on the snow blower. Align the lift arms of the tractor with the snow blower hitch arms by raising or lowering the front hitch and complete the engagement.
2. Once completely engaged, close the front hitch locking lever. *
3. Raise snow blower to the highest position, engage the parking brake*, and shut off the engine.
4. **LT3000:** Place blocks underneath the snow blower to prevent it from lowering. Insert the spring hook through the hole on the upper spring mounting bracket and slip the other spring hook over the spring anchor lever on the snow blower (Fig 1). Rotate the spring anchor lever down until the hole is aligned with one of the holes on the main frame. The lowest hole is recommended. Insert the ball pin to secure. See (Fig 2).

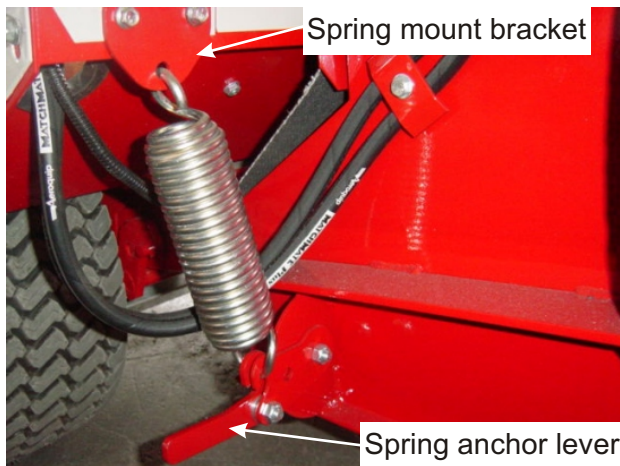


Figure 1



Figure 2

LE3100-3200: Set the weight transfer system* to the maximum amount of weight transfer allowable. (Note: If your LE3100 is not equipped with weight transfer, part # 70.3014 must be ordered).

5. Place the attachment belt over the outside groove of the PTO drive pulley on the tractor. Ensure the belt is properly seated in each pulley.
6. Engage the PTO belt tension spring on the snow blower. See Figure 3. Belt tension can be adjusted by moving the belt tension spring to a different slot. See belt tension adjustment on page D-2.
7. Wipe the quick couplers clean, and connect to the tractor. If equipped, connect the hoses and quick couplers so the red indicators are paired together and the yellow indicators are paired together.
8. Connect the electric plug. (if equipped)

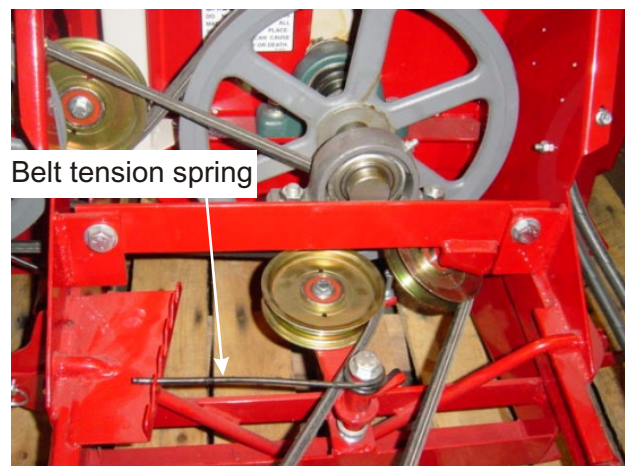


Figure 3

* Refer to tractor manual for operation of controls.

OPERATION

Detaching

1. Park the tractor on a level surface and set the parking brake.*
2. Raise the snow blower to the highest position and shut off tractor engine.
3. Place blocks under snow blower to prevent it from lowering.
4. **LT3000:** To remove the weight transfer springs, hold down the spring anchor lever, remove the ball pin, and slowly rotate the lever up. Remove the springs and keep with the snow blower.
LE3100-3200: Disengage the weight transfer system*.
5. Remove the blocks and lower the snow blower to the ground.
6. Disengage the PTO belt tension spring.
7. Remove the attachment belt from the PTO drive pulley of the tractor.
8. Disconnect the hydraulic quick couplers from the tractor.
9. Disconnect the electric plug. (if equipped)
10. Disengage the hitch locking lever.*
11. Restart tractor and slowly back away from the snow blower.

* Refer to tractor manual for operation of controls.

Operating Techniques & Tips

The tractor should be running approximately 2000-2500 RPM before engaging the PTO.

Always direct the discharge chute toward open areas. Whenever possible, blow snow with the wind direction and not against it.

Rotate the discharge chute until discharge is pointed in the desired direction. Adjust the chute deflector to the desired angle. (Refer to page D-2) Engage the PTO and lower the snow blower to the ground. Push the front lift lever forward until it locks in the float position. Drive forward slowly. Shut off PTO whenever you are not blowing snow.

MAINTENANCE/ADJUSTMENTS

Grease the auger, jack-shaft, & blower shaft bearings approximately every 25 hours. Do not over grease. Usually one or two pumps are sufficient. Additional lubrication may be required in extremely harsh or dirty conditions.

Gearbox manufacturers recommend changing the gearbox oil 50 hours after start up and then every 500 hours or seasonally, whichever comes first.

Check gearbox oil every 100 hours. It should be approximately 1/2 full. Always use 80-90 weight gear oil when changing or adding oil.

Belt Replacement

	Belt Size	Venture Part #
PTO drive belt (from tractor to snow blower)	A90	81.A090
Auger drive belt (X2)	A48	81.A048
Fan Drive Belt	B63	81.B063

Fan Drive Belt Replacement

1. Release the belt tension springs for the fan drive belt.
2. Remove the two bolts from the bracket that holds the rear blower shaft bearing. See Figure 4.

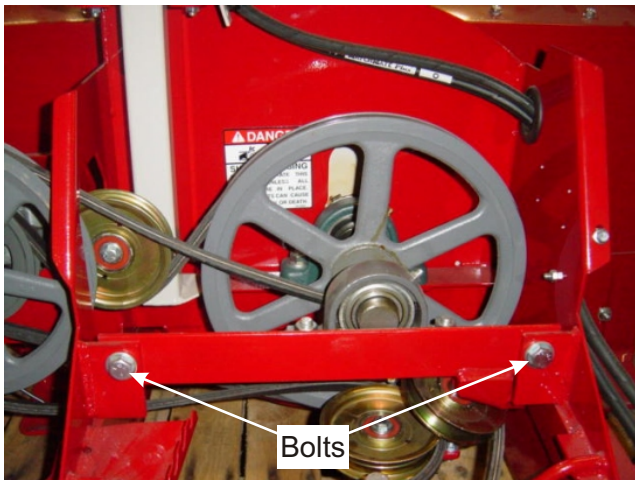


Figure 4

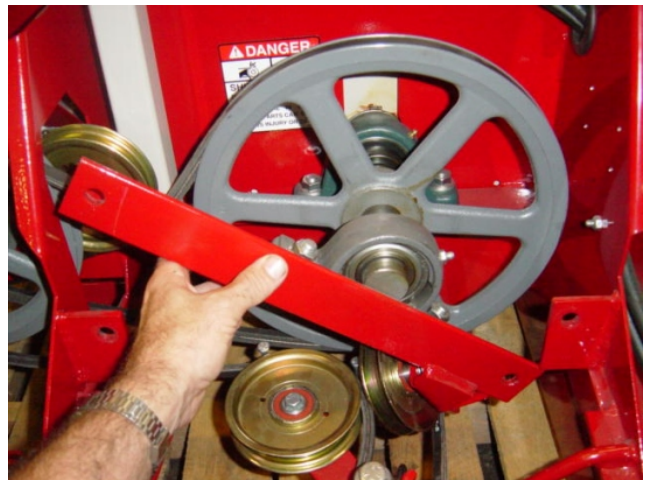


Figure 5

3. Rotate the bracket as shown in Figure 5.
4. Remove the PTO drive belt. Remove the old fan belt and install the new belt. Reinstall the PTO drive belt.
5. Rotate the bracket back into place and install the two bolts.
6. Reapply the belt tension springs for the fan drive belt.

Auger Drive Belt Replacement

1. Remove the auger drive belt cover.
2. Release the belt tension spring and remove the old belt(s).
3. Install the new belt(s) and engage the belt tension spring.
4. Reinstall the auger drive belt cover.

MAINTENANCE/ADJUSTMENTS

Belt Tension Adjustment

The belt spring tension is adjustable. This adjustment allows some belt slippage to protect the gearbox and drive components in the event an immovable object stops the auger or fan. At the factory, the spring is installed with the least amount of tension. The spring tension may be increased if required.

Chute Adjustment

The chute deflector can be manually adjusted to several different settings. Release the chute adjustment link by pulling to the side and move the deflector to the desired angle. Re-engage the chute adjustment link. With the optional electric actuator, the chute deflector can be adjusted with a switch on the tractor. (Part # 70.8025)

Skid Shoe Adjustment

Skid shoes are provided to raise and lower the cutting edge to the desired height. This is helpful when clearing snow on gravel drives and roadways. To adjust the skid shoes, park the tractor and snow blower on a level surface. Raise the snow blower and set blocks of the desired height under the cutting edge. See Figure 6. Lower the snow blower until it is resting on the blocks. Turn off engine and remove key. Loosen the skid shoe mounting bolts and slide the skid shoes down until they touch the ground. Re-tighten the mounting bolts. Both skid shoes should be adjusted to the same height.

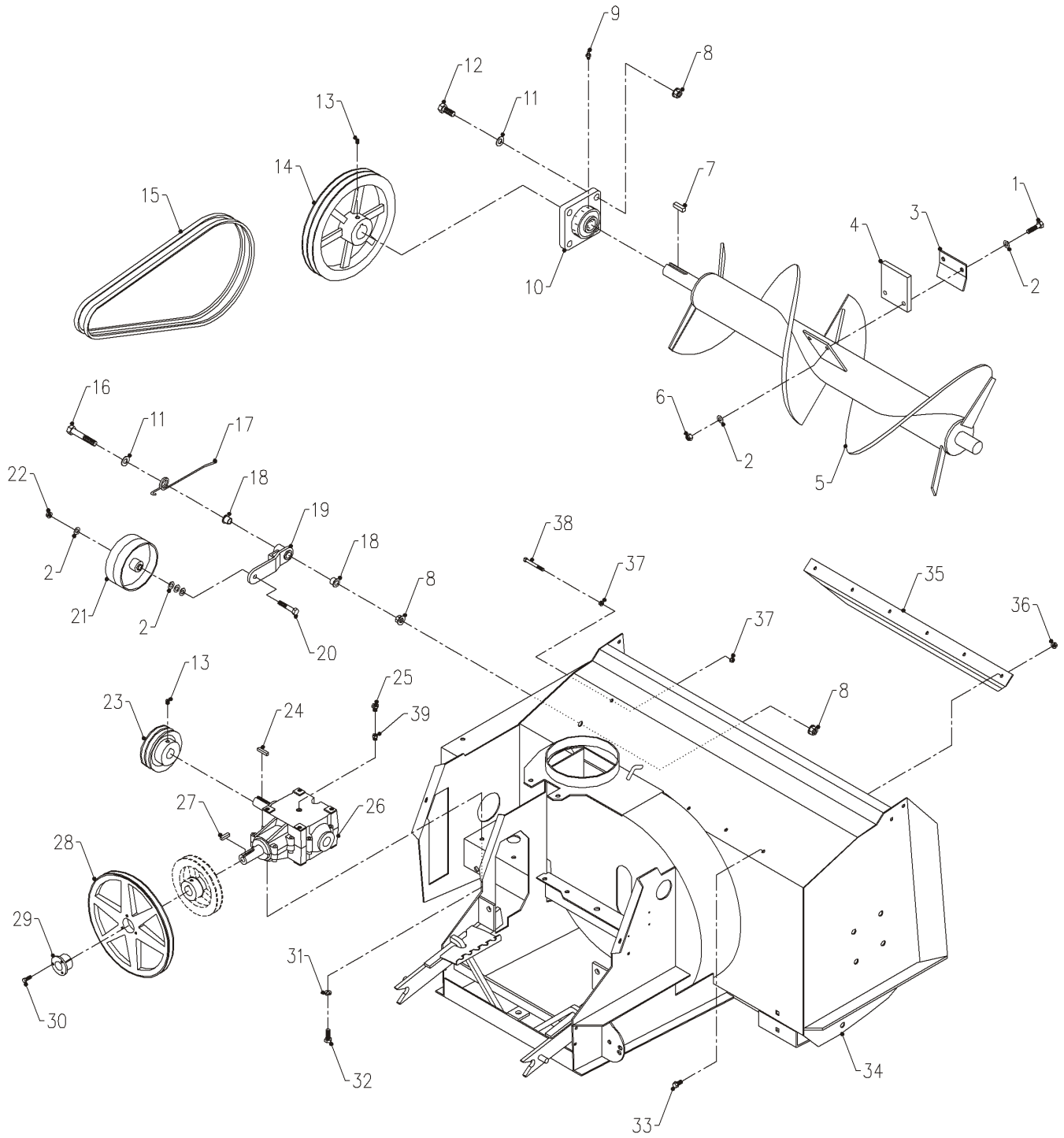


Figure 6

PARTS MANUAL

PARTS

ILLUSTRATED DRAWING MAIN FRAME & AUGER DRIVE



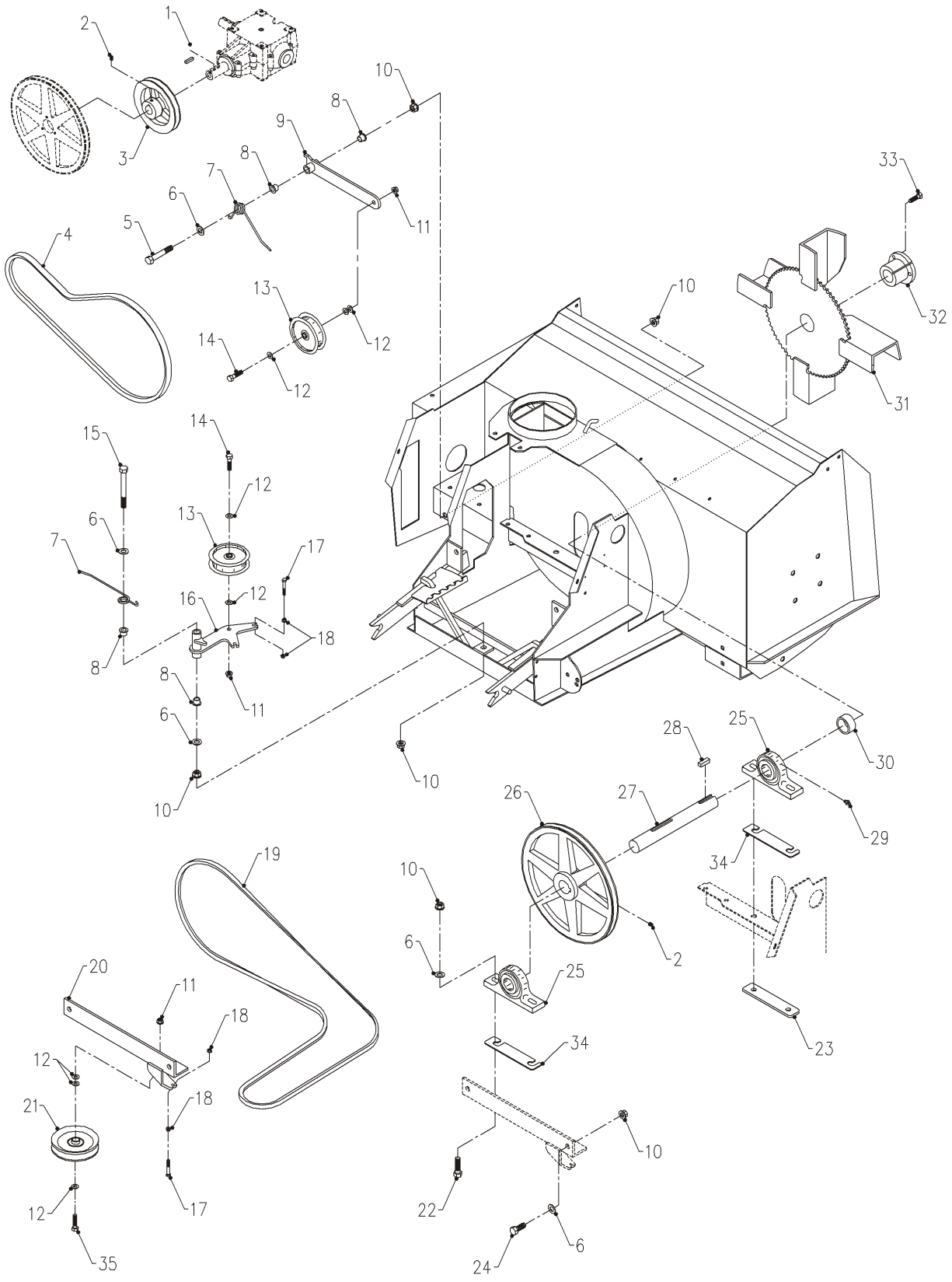
PARTS

MAIN FRAME & AUGER DRIVE

REF.	PART NO.	DESCRIPTION	QTY.
1	90.0612	BOLT, 3/8-16 USS X 1 1/2	4
2	95.06	WASHER, FLAT 3/8 SAE	12
3	64.1088	PLATE, AUGER PADDLE RETAINER	2
4	44.0181	PADDLE, 1/2" 3 PLY 3/8 X 1/16	2
5	80.0348	AUGER, ASM. LX420	1
6	99.A06N	LOCKNUT, NYLON 3/8-16	4
7	85.K0610	KEY, 3/8 X 1 1/4	1
8	99.SF08	NUT, SF 1/2-13 USS	10
9	29.GF0001	GREASE FTG, 1/4 SAE ST	2
10	55.FB22023	BEARING, FLANGE BLOCK 1-7/16"	2
11	95.08	WASHER, FLAT 1/2 SAE	9
12	90.0810	BOLT, 1/2-13 USS X 1 1/4	8
13	85.SS09	SET SCREW, 5/16" X 3/8"	2
14	83.2AK11423	PULLEY, 11.4" 1-7/16" BORE	1
15	81.A048	BELT, A48	2
16	90.0824	BOLT, 1/2-13 USS X 3	1
17	41.0066	SPRING, SINGLE TORSION LH	1
18	85.B0027	BUSHING, 1/2 ID X 5/8 OD X 5/8	2
19	40.0314	IDLER ARM, AUGER DRIVE	1
20	90.0616	BOLT, 3/8-16 USS X 2	1
21	83.0040	PULLEY, IDLER FLAT 5" PLAIN	1
22	99.SF06	NUT, SF 3/8-16 USS	1
23	83.2AK2816	PULLEY, 2.8" 1" BORE	1
24	85.K0410	KEY, 1/4 X 1 1/4	1
25	29.0090	PIPE, BREATHER PLUG 1/8	1
26	87.0219	GEARBOX, CW/CCW 1" SHAFT 2:1	1
27	85.K0408	KEY, 1/4 X 1	1
28	83.BK110H	PULLEY, BK 11" H-BUSH	1
29	83.H16S	BUSHING, 1" SPLIT 1/4" KEY	1
30	90.0406	BOLT, 1/4-20 USS X 3/4	2
31	96.06	WASHER, LOCK 3/8	4
32	90.0608	BOLT, 3/8-16 USS X 1	4
33	99.SF0506	BOLT, SF 5/16-18USS X 3/4	6
34	62.0994	FRAME, MAIN LX420	1
35	60.0876	RETAINER, SNOW THROWER FAN	1
36	99.SF05	NUT, SF 5/16-18 USS	6
37	99.SF04	NUT, SF 1/4-20 USS	6
38	90.0418	BOLT, 1/4-20 USS X 2 1/4	3
39	29.B0204G	PIPE, BUSHING 1/8 X 1/4 GALV.	1

PARTS

ILLUSTRATED DRAWING MAIN DRIVE & FAN DRIVE



PARTS

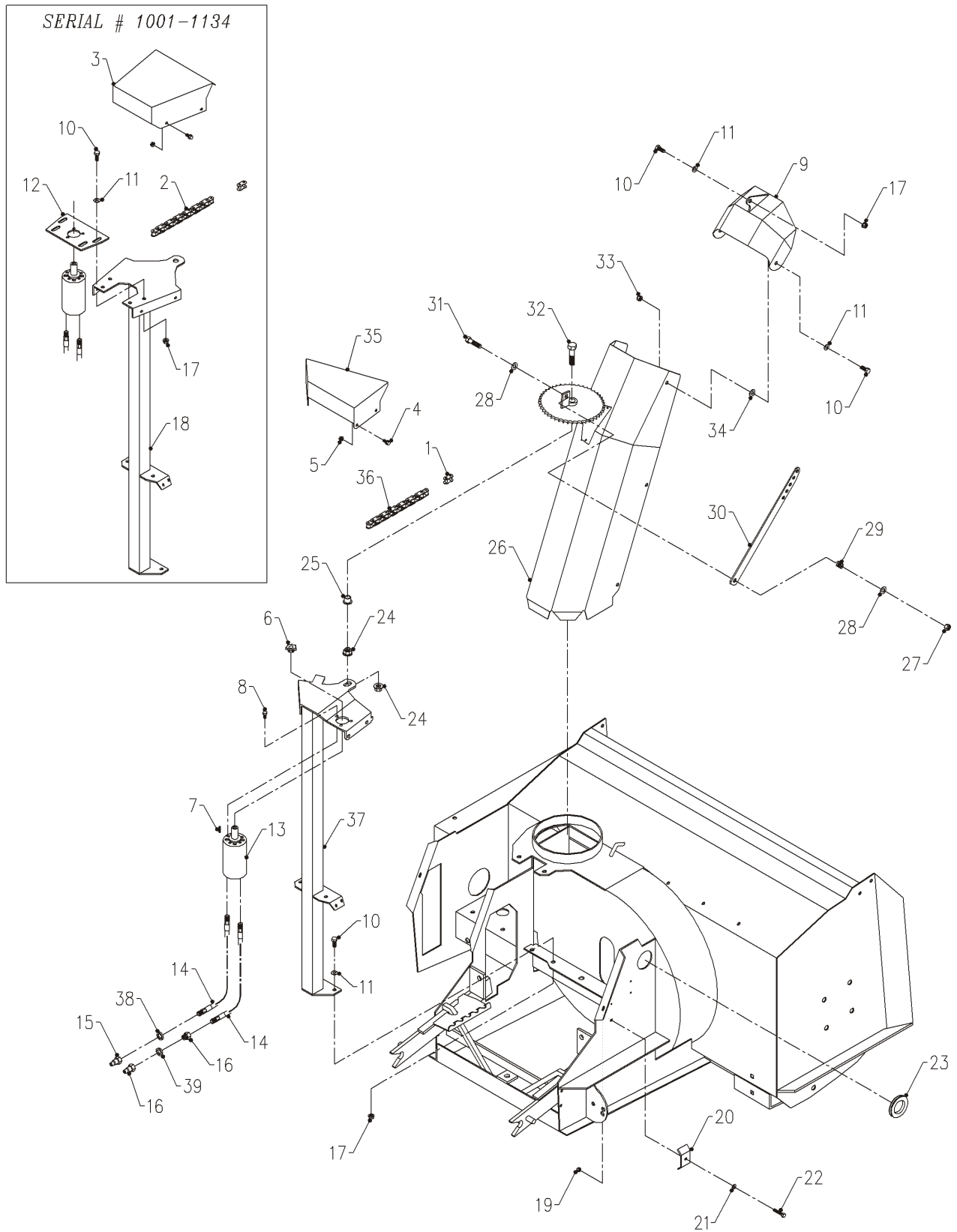
MAIN DRIVE & FAN DRIVE

REF.	PART NO.	DESCRIPTION	QTY.
1	85.K0408	KEY, 1/4 X 1	1
2	85.SS09	SET SCREW, 5/16" X 3/8"	2
3	83.BK6016	PULLEY, 6" 1"BORE	1
4	81.B063	BELT, B63	1
5	90.0824	BOLT, 1/2-13 USS X 3	1
6	95.08	WASHER, FLAT 1/2 SAE	9
7	41.0066	SPRING, SINGLE TORSION LH	2
8	85.B0027	BUSHING, 1/2 ID X 5/8 OD X 5/8	4
9	40.0318	IDLER ARM, BLOWER DRIVE LX420	1
10	99.SF08	NUT, SF 1/2-13 USS	10
11	99.SF06	NUT, SF 3/8-16 USS	3
12	95.06	WASHER, FLAT 3/8 SAE	8
13	83.0037	PULLEY, IDLER FLAT 4" X 3/8	2
14	90.0612	BOLT, 3/8-16 USS X 1 1/2	2
15	90.0836	BOLT, 1/2-13 USS X 4 1/2	1
16	40.0320	IDLER ARM, POWER SUPPLY BELT	1
17	90.0414	BOLT, 1/4-20 USS X 1 3/4	3
18	99.SF04	NUT, SF 1/4-20 USS	6
19	81.A090	BELT, A90	1
20	64.1096	MOUNT, BEARING IDLER LX420	1
21	83.0038	PULLEY, V-IDLER 4-1/4 X 3/8 ID	1
22	90.0814	BOLT, 1/2-13 USS X 1 3/4	4
23	64.1099	PLATE, BEARING REINFORCEMENT	1
24	90.0810	BOLT, 1/2-13 USS X 1 1/4	2
25	55.PB22023	BEARING, PILLOW BLOCK 1 7/16	2
26	83.BK13023	PULLEY, 13" 1-7/16" BORE	1
27	80.0346	SHAFT, THROWER FAN	1
28	85.K0610	KEY, 3/8 X 1 1/4	2
29	29.GF0001	GREASE FTG, 1/4 SAE ST	2
30	64.1100	BUSHING, 1-1/2 X 2 X 7/8	1
31	80.0344	BLOWER, SNOW BLOWER	1
32	83.Q123	BUSHING, 1 7/16" Q1	1
33	90.0610	BOLT, 3/8-16 USS X 1 1/4	3
34	64.1249	SHIM, BEARING KX/LX	A/R*
35	90.0614	BOLT, 3/8-16 USS X 1 3/4	1

*As Required

PARTS

ILLUSTRATED DRAWING CHUTE & HYDRAULICS



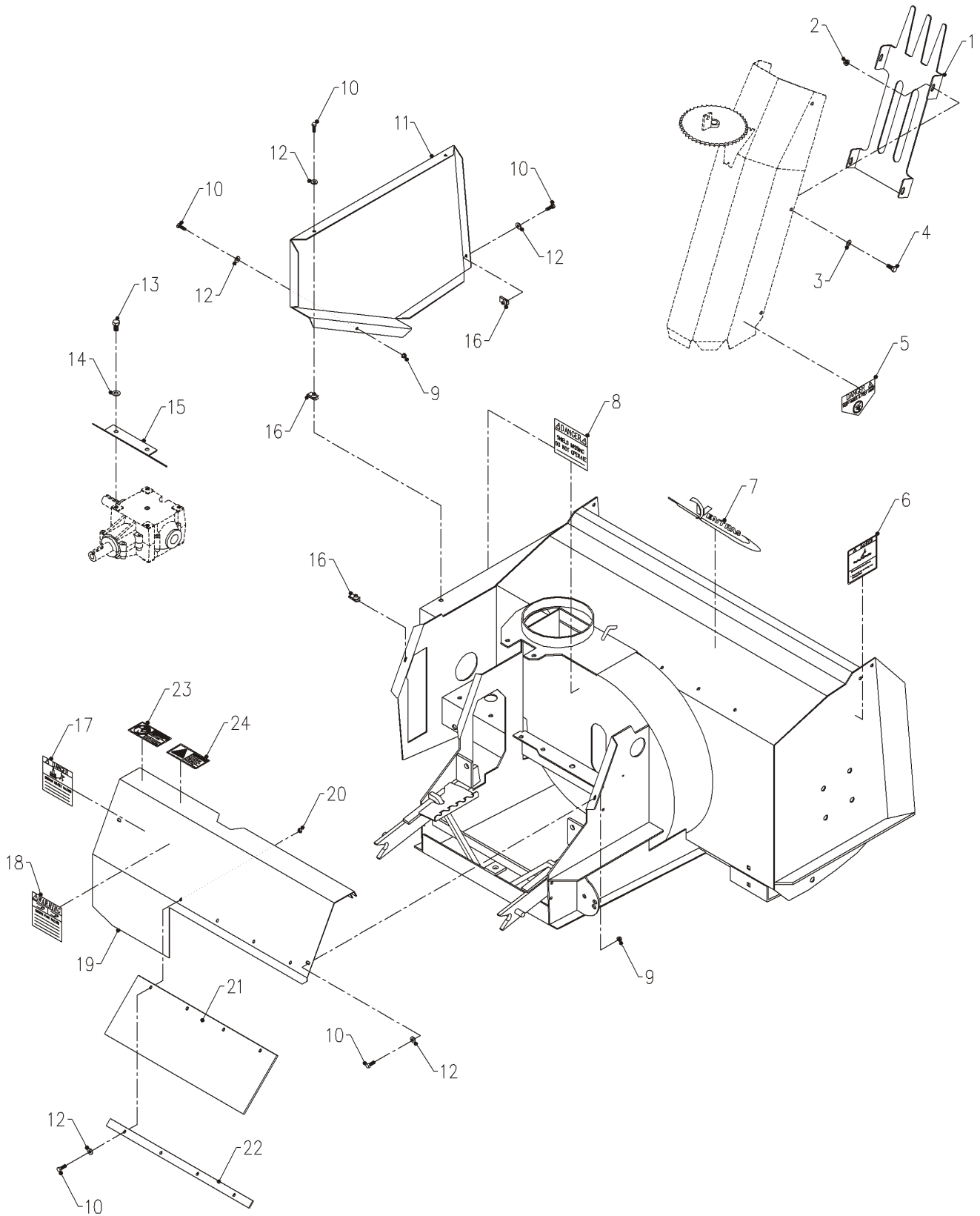
PARTS

CHUTE & HYDRAULICS

REF.	PART NO.	DESCRIPTION	QTY.
1	81.0056-1	LINK, CONN. #40 SS	1
2	81.0147	CHAIN, ROLLER #40 X 30-7/8 SS (SERIAL # 1001-1134)	1
3	60.0872	SHIELD, ROTATOR CHAIN COVER (SERIAL # 1001-1134)	1
4	99.SF0404-1	BOLT, SF 1/4-20 X 1/2 W/RUBBER	4
5	99.SF04	NUT, SF 1/4-20 USS	4
6	83.H409	SPROCKET, #40 9-T HRD 5/8 BORE	1
7	85.K0307	KEY, 3/16 X 5/8	1
8	91.0404	BOLT, 1/4-28 SAE X 1/2	3
9	60.0884	DEFLECTOR, CHUTE LX	1
10	90.0506	BOLT, 5/16-18 USS X 3/4	11
11	95.05	WASHER, FLAT 5/16 SAE	11
12	62.1000	MOUNT, MOTOR HYD. (SERIAL # 1001-1134)	1
13	21.0113	MOTOR, HYD PEERLESS 1.93 CU.IN	1
14	20.0210	HOSE, ASM C 1/4 X 78"-2750	2
15	23.0104	COUPLER, HYD. QUICK MALE 1/4	2
16	29.0092	FITTING, .025 ORIFICE 1/4 PIPE	1
17	99.SF0506	BOLT, SF 5/16-18 USS X 3/4	9
18	62.0993	POST, CHUTE MOUNT (SERIAL # 1001-1134)	1
19	99.A04	LOCKNUT, STOVER 1/4-20 USS	1
20	64.0673	CLAMP, HYD. HOSE 3/8-1/4	1
21	95.04	WASHER, FLAT 1/4 SAE	1
22	90.0410	BOLT, 1/4-20 USS X 1 1/4	1
23	05.0040	GROMMET, 1 1/2ID, 2-3/8OD, 3/32T	1
24	99.SF08	NUT, SF 1/2-13 USS	2
25	85.B0027	BUSHING, 1/2 ID X 5/8 OD X 5/8	1
26	62.1012	CHUTE, MAIN SNOW BLOWER LX420	1
27	99.A06	LOCKNUT, STOVER 3/8-16 USS	1
28	95.06	WASHER, FLAT 3/8 SAE	2
29	41.0039	SPRING, COMP. 9/16 OD X 5/8	1
30	42.0462	LINK, CHUTE ADJUSTMENT	1
31	90.0612	BOLT, 3/8-16 USS X 1 1/2	1
32	90.0816	BOLT, 1/2-13 USS X 2	1
33	99.A05	LOCKNUT, STOVER 5/16-18 USS	2
34	05.0055	WASHER, NYLON .34 X .74 X .062	2
35	60.1013	COVER, MOTOR CHUTE ROTATION (SERIAL # 1135-)	1
36	81.0153	CHAIN, ROLLER #40 X 28" SS (SERIAL # 1135-)	1
37	62.1280	POST, CHUTE MOUNT (SERIAL # 1135-)	1
38	05.0117	WASHER, .544ID X .817 X .14 YEL	1
39	05.0116	WASHER, .544ID X .817 X .14 RED	1

PARTS

ILLUSTRATED DRAWING SHIELDS & DECALS



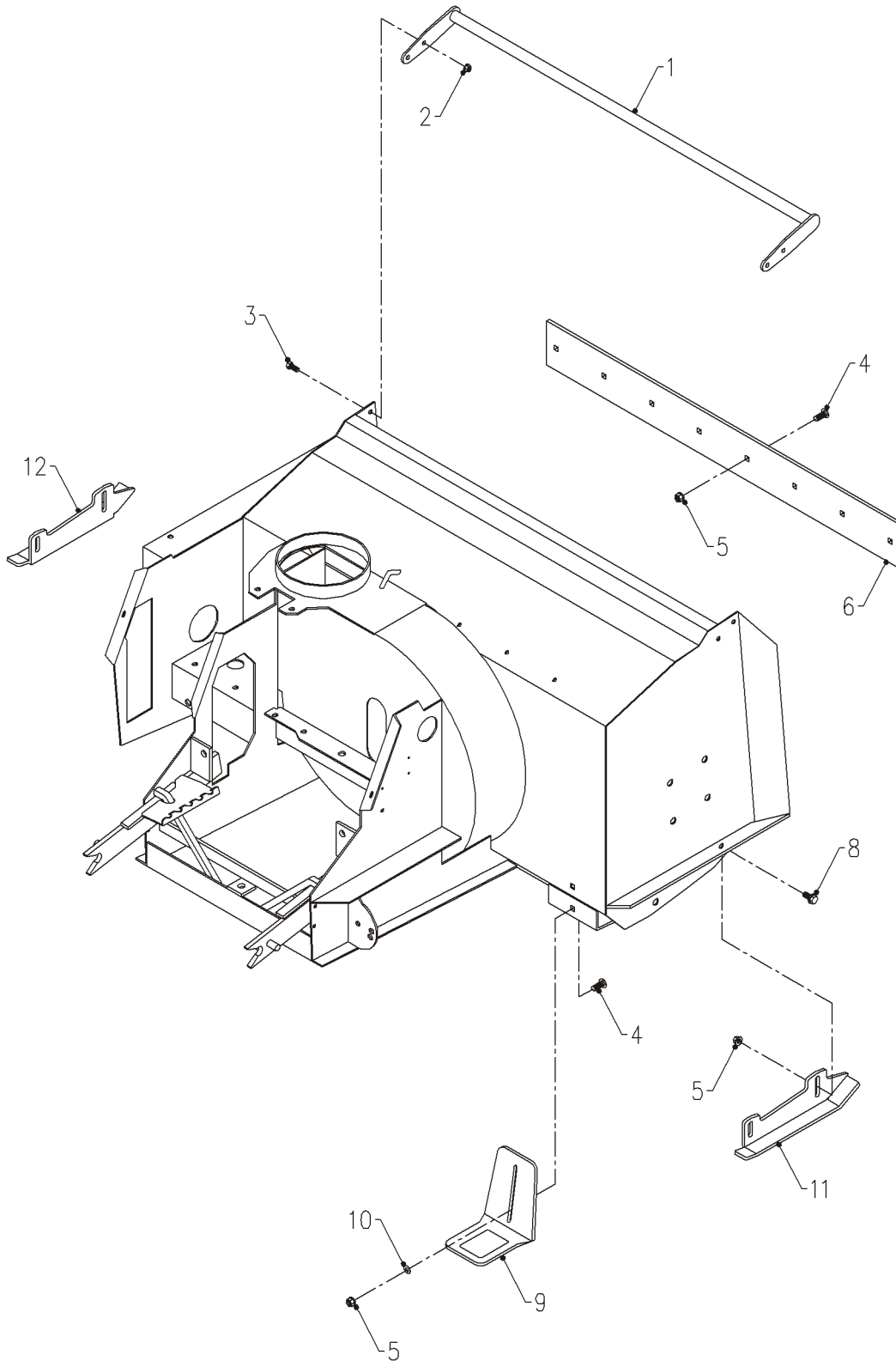
PARTS

SHIELDS & DECALS

REF.	PART NO.	DESCRIPTION	QTY.
1	60.0885	GUARD, SNOWBLOWER CHUTE.	1
2	99.SF05	NUT, SF 5/16-18 USS	4
3	95.05	WASHER, FLAT 5/16 SAE	4
4	90.0506	BOLT, 5/16-18 USS X 3/4	4
5	00.0123	DECAL, KEEP HAND AND FEET AWAY	2
6	00.0208	DECAL, DANGER AUGER HAZARD	2
7	00.0189	DECAL, VENTRAC ORBITAL	1
8	00.0062	DECAL, DANGER SHIELD MISSING	2
9	99.SF04	NUT, SF 1/4-20 USS	2
10	90.0406	BOLT, 1/4-20 USS X 3/4	10
11	60.0868	SHIELD, AUGER DRIVE BELT	1
12	95.04	WASHER, FLAT 1/4 SAE	10
13	90.0606	BOLT, 3/8-16 USS X 3/4	2
14	95.06	WASHER, FLAT 3/8 SAE	2
15	60.0874	SHIELD, GEARBOX DRIVE LX420	1
16	99.E0046	NUT, "U" 1/4-20 EXTRUDED	4
17	00.0122	DECAL, THROWN OBJECT HAZARD	1
18	00.0101	DECAL, HAZARD-MOVING PART	1
19	60.0875	COVER, GEAR BOX/FAN BELT LX	1
20	99.A04	LOCKNUT, STOVER 1/4-20 USS	4
21	44.0204	BELTING, DRIVE BELT COVER	1
22	64.1097	CLAMP, BELT SHIELD LX420	1
23	00.0217	DECAL, WARNING READ OWNERS MAN	1
24	00.0220	DECAL, GENERAL SAFETY	1

PARTS

ILLUSTRATED DRAWING CUTTING EDGE, BUMP BAR, & SKID SHOES



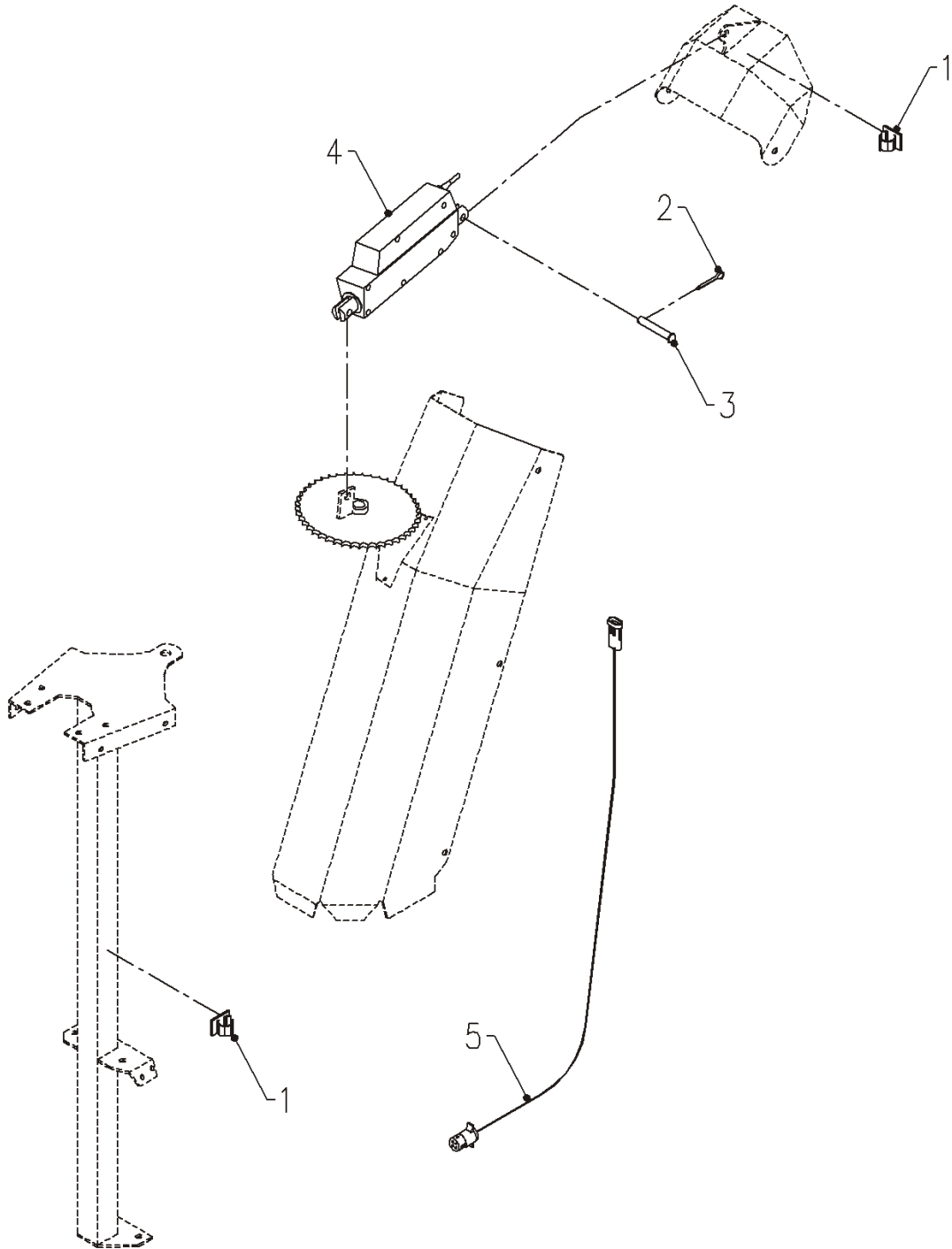
PARTS

CUTTING EDGE, BUMP BAR, & SKID SHOES

REF.	PART NO.	DESCRIPTION	QTY.
1	62.1014	BAR, TUBULAR BUMP LX	1
2	99.SF05	NUT, SF 5/16-18 USS	4
3	90.0506	BOLT, 5/16-18 USS X 3/4	4
4	97.0608	BOLT, CARRIAGE 3/8 X 1	12
5	99.SF06	NUT, SF 3/8-16 USS	16
6	78.0060	CUTTING EDGE, 37" THRU HARD	1
8	99.SF0606	BOLT, SF 3/8-16 USS X 3/4	4
9	64.1087	SHOE, SKID KX/LX	2
10	94.05	WASHER, FLAT 5/16 USS	4
11	60.0981	SHOE, RIGHT WEAR EDGE	1
12	60.0984	SHOE, LEFT WEAR EDGE	1

PARTS/OPTIONS

ILLUSTRATED DRAWING 12 V ACTUATOR DEFLECTOR CONTROL



PARTS/OPTIONS

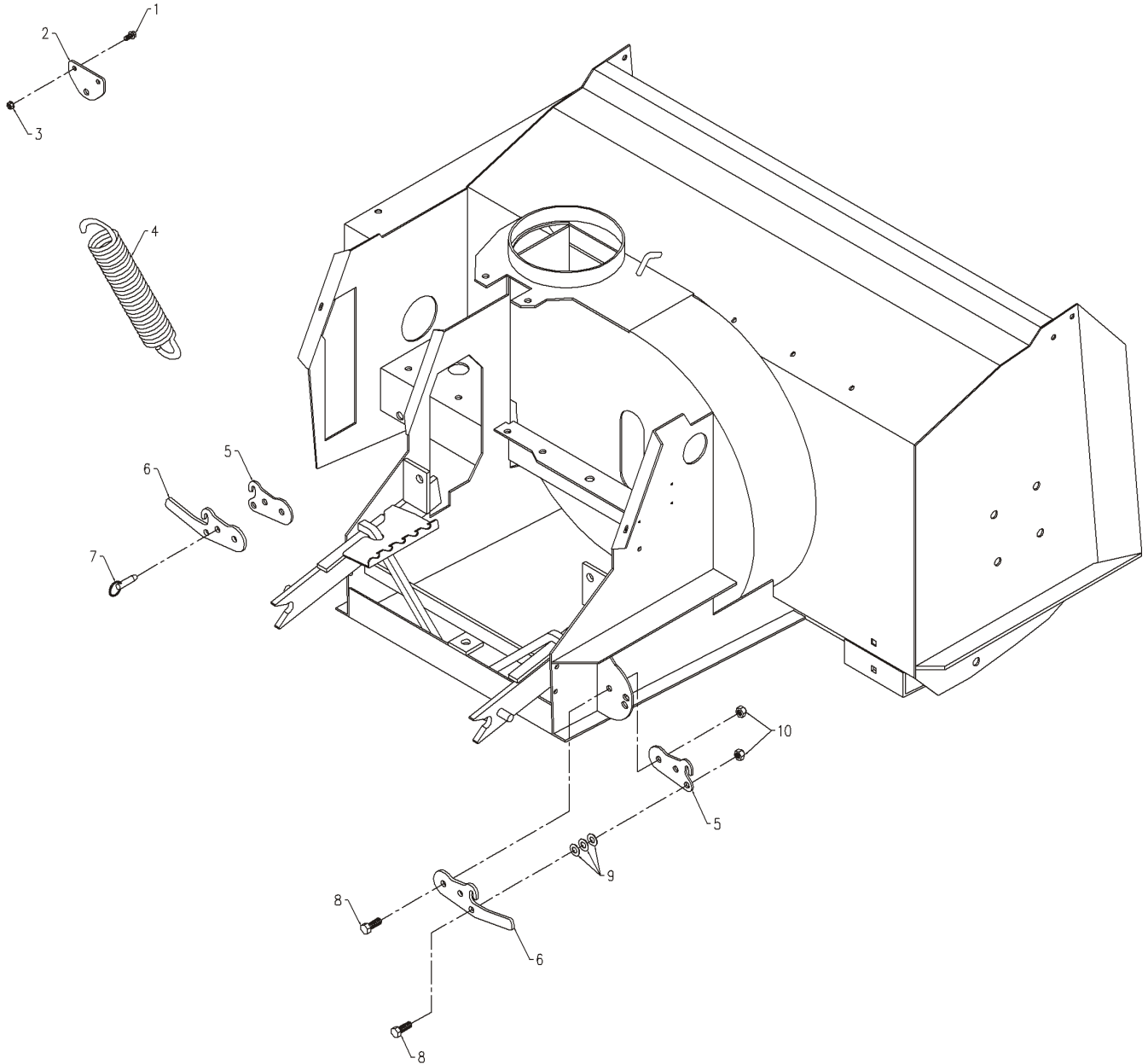
12 V ACTUATOR DEFLECTOR CONTROL

REF.	PART NO.	DESCRIPTION	QTY.
1	30.0226	CLAMP, WIRE MT ADH. 3/8 GRAY	2
2	02.CP0306	COTTER PIN, 3/32 X 3/4	2
3	03.0610	CLEVIS PIN, 3/8 X 1 1/4 ZP	2
4	70.8025	KIT, 12V ACTUATOR, HB/KX	1
5	34.1400-1005	WIRE, 14 GA 2 WIRE X 66"	1

PARTS/OPTIONS

ILLUSTRATED DRAWING WEIGHT TRANSFER FOR LT3000 TRACTORS

OPTIONAL WEIGHT TRANSFER FOR LT3000 TRACTORS
KIT # 70.3023



PARTS/OPTIONS

WEIGHT TRANSFER FOR LT3000 TRACTORS

REF.	PART NO.	DESCRIPTION	QTY.
1	99.SF0404	BOLT, SF 1/4-20 X 1/2	4
2	64.1116	PLATE, SPRING ANCHOR MOUNTING	2
3	99.SF04	NUT, SF 1/4-20 USS	4
4	41.0075	SPRING, EXT 2" OD X 8-3/8" LG	2
5	64.1115	PLATE, SPRING ANCHOR COMPANION	2
6	40.0321	LEVER, SPRING ANCHOR	2
7	03.0006	PIN, BALL 3/8 X 1"	2
8	90.0608	BOLT, 3/8-16 USS X 1	4
9	95.06	WASHER, FLAT 3/8 SAE	6
10	99.A06	LOCKNUT, STOVER 3/8-16 USS	4